

Product datasheet for **TP306551L**

Cadherin 16 (CDH16) (NM_004062) Human Recombinant Protein

Product data:

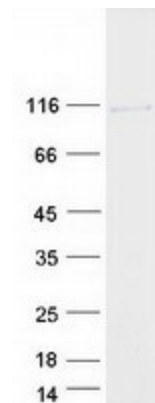
Product Type:	Recombinant Proteins
Description:	Recombinant protein of human cadherin 16, KSP-cadherin (CDH16), 1 mg
Species:	Human
Expression Host:	HEK293T
Expression cDNA Clone or AA Sequence:	>RC206551 representing NM_004062 Red =Cloning site Green =Tags(s)
	<p>MVPAWLWLLCVSPQALPKAQAELSVEVPENYGGNFPLYTLKLPLPREGAEGQIVLSGDSGKATEGPFA MDPDSGFLLVTRALDREEQAEYQLQVTLEMQDGHVLWGPQPVLVHVKDENDQVPHFSQAIYRARLSRG TR PGIPFLFLEASDRDEPGTANSDLRFHILSQAPAQSPDMFQLEPRLGALALSPKGSTSLDHALERTYQLL VQVKDMGDQASGHQATATVEVSIIESTWVSLEPIHLAENLKVLYPHHMAQVHWSSGGDVHYHLESHPPG PF EVNAEGNLYVTRELDREAQAEYLLQVRAQNSHGEDIAAPLELHVLVMDENDNVPICPPRDPTVSIPELSP PGTEVTRLAEDADAPGSPNSHWYQLLSPEPEDGVEGRAQVDPTSGSVTLGVPLRAGQNILLVLAM DLAGAEGGFSSTCEVEVAVTDINDHAPEFITSQIGISPDPEDVEPGTLVAMLTADADLEPAFRLMDFAI ERGDTEGTGFLDWEPDSGHVRLRLCKNLSYEAAPSHEVWWWQSVAKLVGPGPGGATATVTVLVERVMP PPKLDQESYEASVPISAPAGSFLLTIQPSDPISRTLRFSLVNDSEGWLCIEKFSGEVHTAQSLQGAQPGD TYTVLVEAQDTDEPRLSASAPLVHFLKAPPAPALTAPVPSQYLCTPRQDHGLIVSGPSKDPDLASGHG PYSFTLGPNTVQRDWRLQTLNGSHAYLTALHWWEPREHIIPVVVSHNAQMWQLLVRVIVCRCNVEGQ C MRKVGRMKGMPTKLSAVGILVGTLVAGIFLILIFTHWTMSRKKDPDQPADSVPLKATV</p> <p>TRTRPLEQKLISEEDLAANDILDYKDDDDKV</p>
Tag:	C-Myc/DDK
Predicted MW:	87.9 kDa
Concentration:	>0.05 µg/µL as determined by microplate BCA method
Purity:	> 80% as determined by SDS-PAGE and Coomassie blue staining
Buffer:	25 mM Tris-HCl, 100 mM glycine, pH 7.3, 10% glycerol



[View online »](#)

Preparation:	Recombinant protein was captured through anti-DDK affinity column followed by conventional chromatography steps.
Note:	For testing in cell culture applications, please filter before use. Note that you may experience some loss of protein during the filtration process.
Storage:	Store at -80°C.
Stability:	Stable for 12 months from the date of receipt of the product under proper storage and handling conditions. Avoid repeated freeze-thaw cycles.
RefSeq:	<u>NP_004053</u>
Locus ID:	1014
UniProt ID:	<u>O75309</u>
RefSeq Size:	2833
Cytogenetics:	16q22.1
RefSeq ORF:	2487
Summary:	This gene is a member of the cadherin superfamily, genes encoding calcium-dependent, membrane-associated glycoproteins. Mapped to a previously identified cluster of cadherin genes on chromosome 16q22.1, the gene localizes with superfamily members CDH1, CDH3, CDH5, CDH8 and CDH11. The protein consists of an extracellular domain containing 6 cadherin domains, a transmembrane region and a truncated cytoplasmic domain but lacks the prosequence and tripeptide HAV adhesion recognition sequence typical of most classical cadherins. Expression is exclusively in kidney, where the protein functions as the principal mediator of homotypic cellular recognition, playing a role in the morphogenic direction of tissue development. Alternatively spliced transcript variants encoding distinct isoforms have been identified. [provided by RefSeq, Mar 2011]
Protein Families:	Transmembrane

Product images:



Coomassie blue staining of purified CDH16 protein (Cat# [TP306551]). The protein was produced from HEK293T cells transfected with CDH16 cDNA clone (Cat# [RC206551]) using MegaTran 2.0 (Cat# [TT210002]).