

Product datasheet for **TP306546M**

GRAP2 (NM_004810) Human Recombinant Protein

Product data:

Product Type: Recombinant Proteins

Description: Recombinant protein of human GRB2-related adaptor protein 2 (GRAP2), 100 µg

Species: Human

Expression Host: HEK293T

Expression cDNA >RC206546 protein sequence

Clone or AA Red=Cloning site Green=Tags(s)

Sequence:

MEAVAKFDFTASGEDELSFHTGDVLKILSNQEEWFKAELGSQEGYVPKNFIDIQFPKWFHEGLSRHQAEEN
LLMGKEVGVFFIIRASQSSPGDFSIIVRHEDDVQHFKVMRDNKGNYFLWTEKFPKSLNKLVDYYRTNSISRQ
KQIFLRDRTREDQGHGNSLDRRSQGGPHLSGAVGEEIRPSMNRKLSDHPTLPLQHQHQPPQYAPA
PQQLQQPPQQRYLQHHHFHQERRGGLDINDGHCCTGLGSEMNAALMHRHHTDPVQLQAAGRVRWARALY
DFALEDDELGFHSGEVVEVLDSSNPSWWTGRLHNKLGFLPANYVAPMTR

TRTRPLEQKLISEEDLAANDILDYKDDDDKV

Tag: C-Myc/DDK

Predicted MW: 37.7 kDa

Concentration: >0.05 µg/µL as determined by microplate BCA method

Purity: > 80% as determined by SDS-PAGE and Coomassie blue staining

Buffer: 25 mM Tris-HCl, 100 mM glycine, pH 7.3, 10% glycerol

Preparation: Recombinant protein was captured through anti-DDK affinity column followed by conventional chromatography steps.

Note: For testing in cell culture applications, please filter before use. Note that you may experience some loss of protein during the filtration process.

Storage: Store at -80°C.

Stability: Stable for 12 months from the date of receipt of the product under proper storage and handling conditions. Avoid repeated freeze-thaw cycles.

RefSeq: [NP_004801](#)

Locus ID: 9402



[View online »](#)

UniProt ID: [O75791](#), [Q6FI14](#)

RefSeq Size: 3514

Cytogenetics: 22q13.1

RefSeq ORF: 990

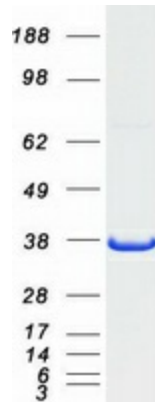
Synonyms: GADS; GRAP-2; GRB2L; GRBLG; GrbX; Grf40; GRID; GRPL; Mona; P38

Summary: This gene encodes a member of the GRB2/Sem5/Drk family. This member is an adaptor-like protein involved in leukocyte-specific protein-tyrosine kinase signaling. Like its related family member, GRB2-related adaptor protein (GRAP), this protein contains an SH2 domain flanked by two SH3 domains. This protein interacts with other proteins, such as GRB2-associated binding protein 1 (GAB1) and the SLP-76 leukocyte protein (LCP2), through its SH3 domains. Multiple alternatively spliced transcript variants encoding distinct isoforms have been found for this gene. [provided by RefSeq, Apr 2014]

Protein Families: Druggable Genome

Protein Pathways: T cell receptor signaling pathway

Product images:



Coomassie blue staining of purified GRAP2 protein (Cat# [TP306546]). The protein was produced from HEK293T cells transfected with GRAP2 cDNA clone (Cat# [RC206546]) using MegaTran 2.0 (Cat# [TT210002]).