

## Product datasheet for TP306546

### GRAP2 (NM\_004810) Human Recombinant Protein

#### Product data:

Product Type:	Recombinant Proteins
Description:	Recombinant protein of human GRB2-related adaptor protein 2 (GRAP2), 20 µg
Species:	Human
Expression Host:	HEK293T
Expression cDNA Clone or AA Sequence:	>RC206546 protein sequence <b>Red</b> =Cloning site <b>Green</b> =Tags(s)
	MEAVAKFDFTASGEDELSFHTGDVLKILSNQEEWFKAELGSQEGYVPKNFIDIQFPKWFHEGLSRHQAEN LLMGKEVGGFFIIRASQSSPGDFSIIVRHEDDVQHFKVMRDNKGNYFLWTEKFPSLNKLVYRTNSISRQ KQIFLRDRTREDQGHGNSLDRRSQGGPHLSGAVGEEIRPSMNRKLSDHPTLPLQHQHQPPQYAPA PQQLQQPPQQRYLQHHHFHQERRGGLDINDGHCCTGLGSEMNAALMHRHTDPVQLQAAGRVRWARALY DFALEDDELGFHSGEVVEVLDSSNPSWWTGRLHNKLGFPANYVAPMTR
	<b>TRTRPLEQKLISEEDLAANDILDYKDDDDKV</b>
Tag:	C-Myc/DDK
Predicted MW:	37.7 kDa
Concentration:	>0.05 µg/µL as determined by microplate BCA method
Purity:	> 80% as determined by SDS-PAGE and Coomassie blue staining
Buffer:	25 mM Tris-HCl, 100 mM glycine, pH 7.3, 10% glycerol
Preparation:	Recombinant protein was captured through anti-DDK affinity column followed by conventional chromatography steps.
Note:	For testing in cell culture applications, please filter before use. Note that you may experience some loss of protein during the filtration process.
Storage:	Store at -80°C.
Stability:	Stable for 12 months from the date of receipt of the product under proper storage and handling conditions. Avoid repeated freeze-thaw cycles.
RefSeq:	<u><a href="#">NP_004801</a></u>
Locus ID:	9402



[View online »](#)

UniProt ID: [O75791](#), [Q6FI14](#)

RefSeq Size: 3514

Cytogenetics: 22q13.1

RefSeq ORF: 990

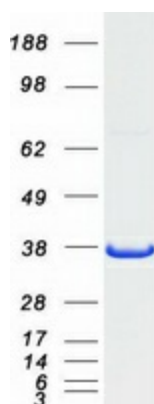
Synonyms: GADS; GRAP-2; GRB2L; GRBLG; GrbX; Grf40; GRID; GRPL; Mona; P38

**Summary:** This gene encodes a member of the GRB2/Sem5/Drk family. This member is an adaptor-like protein involved in leukocyte-specific protein-tyrosine kinase signaling. Like its related family member, GRB2-related adaptor protein (GRAP), this protein contains an SH2 domain flanked by two SH3 domains. This protein interacts with other proteins, such as GRB2-associated binding protein 1 (GAB1) and the SLP-76 leukocyte protein (LCP2), through its SH3 domains. Multiple alternatively spliced transcript variants encoding distinct isoforms have been found for this gene. [provided by RefSeq, Apr 2014]

**Protein Families:** Druggable Genome

**Protein Pathways:** T cell receptor signaling pathway

### Product images:



Coomassie blue staining of purified GRAP2 protein (Cat# TP306546). The protein was produced from HEK293T cells transfected with GRAP2 cDNA clone (Cat# [RC206546]) using MegaTran 2.0 (Cat# [TT210002]).