

Product datasheet for **TP306542M**

ALS (IGFALS) (NM_004970) Human Recombinant Protein

Product data:

Product Type:	Recombinant Proteins
Description:	Recombinant protein of human insulin-like growth factor binding protein, acid labile subunit (IGFALS), 100 µg
Species:	Human
Expression Host:	HEK293T
Expression cDNA Clone or AA Sequence:	>RC206542 protein sequence Red =Cloning site Green =Tags(s)

MALRKGGLALALLLSWVALGPRSLEGADPGTPGEAEGPACPAACVCSYDDDADELSVFCSSRNLTRLPD
GVPGGTQALWLDGNNLSSVPPAAFQNLSSLGFLNLQGGQLGSLEPQALLGLENLCHLHLERNQLRSLALG
TFAHTPALASLGLSNNRLSRLEDGLFEGLSLWDLNLGWNSLAVLPDAAFRGLGSLRELVLAGNRLAYLQ
PALFSGLAELRELDLSRNALRAIKANVFVQLPRLQKLYLDRNLIAAVAPGAFLGLKALRWLDLSHNRVAG
LLEDTFPGLLGLRVLRSLSHNAIASLRPRTFKDLHFLEELQLGHNRIQLAERSFEGLGQLEVLTDHNQL
QEVKAGAFGLTNMAVMNLSGNCLRNLPQVFRGLGKLHSLHLEGSCLGRIRPHTFTGLSGLRRLFLKDN
GLVGIEEQSLWGLAELLELDLTSNQLTHLPHRLFQGLGKLEYLLSRNRLAELPADALGPLQRAFWLDVS
HNRLEALPNSLLAPLGRRLRYLSLRNNSLRFTFPQPPGLERLWLEGNPWDCGCPKALRDFALQNPASVPR
FVQAICEGDDCQPPAYTYNNITCASPPEVGLDLRDLSEAHFAPC

TRTRPLEQKLISEEDLAANDILDYKDDDDKV

Tag:	C-Myc/DDK
Predicted MW:	63.2 kDa
Concentration:	>0.05 µg/µL as determined by microplate BCA method
Purity:	> 80% as determined by SDS-PAGE and Coomassie blue staining
Buffer:	25 mM Tris-HCl, 100 mM glycine, pH 7.3, 10% glycerol
Preparation:	Recombinant protein was captured through anti-DDK affinity column followed by conventional chromatography steps.
Note:	For testing in cell culture applications, please filter before use. Note that you may experience some loss of protein during the filtration process.
Storage:	Store at -80°C.



[View online »](#)

Stability: Stable for 12 months from the date of receipt of the product under proper storage and handling conditions. Avoid repeated freeze-thaw cycles.

RefSeq: [NP_004961](#)

Locus ID: 3483

UniProt ID: [P35858](#), [Q8TAY0](#)

RefSeq Size: 2168

Cytogenetics: 16p13.3

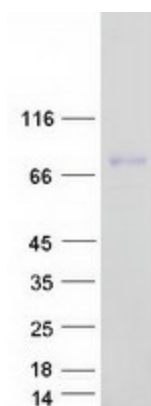
RefSeq ORF: 1815

Synonyms: ACLSD; ALS

Summary: The protein encoded by this gene is a serum protein that binds insulin-like growth factors, increasing their half-life and their vascular localization. Production of the encoded protein, which contains twenty leucine-rich repeats, is stimulated by growth hormone. Defects in this gene are a cause of acid-labile subunit deficiency, which manifests itself in a delayed and slow puberty. Three transcript variants encoding two different isoforms have been found for this gene. [provided by RefSeq, Mar 2009]

Protein Families: Druggable Genome, Secreted Protein

Product images:



Coomassie blue staining of purified IGFALS protein (Cat# [TP306542]). The protein was produced from HEK293T cells transfected with IGFALS cDNA clone (Cat# [RC206542]) using MegaTran 2.0 (Cat# [TT210002]).