

## Product datasheet for TP306537M

### NSP3 (SH2D3C) (NM\_005489) Human Recombinant Protein

#### Product data:

Product Type:	Recombinant Proteins
Description:	Recombinant protein of human SH2 domain containing 3C (SH2D3C), transcript variant 2, 100 µg
Species:	Human
Expression Host:	HEK293T
Expression cDNA Clone or AA Sequence:	>RC206537 protein sequence Red=Cloning site Green=Tags(s)

MTAVGRRCPALGSRGAAGEPEAGSDYVKFSKEKYILDSSPEKLHKELEEELKLSSTDLRSHAWYHGRIPR  
EVSETLVQRNGDFLIRDLSLTDYVLCRWRNQLHFINKVVKAGESYTHIQYLFEQESFDHVPALV  
RYHVGSRKAVSEQSGAIYCPVNRTFPLRYLEASYGLGQGSSKPASPVSPSGPKGSHMKRRSVTMTDGLT  
ADKVTRSDGCPTSTSLPRPRDSIRSCALSMDQIPDLHSPMSPISESPSSPAYSTVTRVHAAPAAPSATAL  
PASPVARRSSEPQLCPGSAPKTHGESDKGPHTSPSHTLGKASPSLSSYSDPDSGHYCQLQPPVRSRE  
WAATETSSQARSYGERLKESENGAPEGDWGKTFTVPIVEVTSSFNATFQSLIPRDNRPLEVGLLRK  
VKELLAEVDARTLARHVTKVDCLVARILGVTKEMQTLMGVVRWGMELLTPHGRQLRLDLLERFHTMSIML  
AVDILGCTGSAEERAALLHKTIQLAELRGTMGNMFSFAAVMGALDMAQISRLEQTWVTLRQRHTEGAIL  
YEKKLKPFLKSLNEGKEGPPLSNTTFPHVLPILITLLECDAPPEGPEPWGSTEHGVEVLAHLEAARTVA  
HHGGLYHTNAEVKLQGFQARPELLEVFSTEFQMRLWLWGSQGASSSQARRYEKFDKVLTAISHKLEPAVRS  
SEL

TRTRPLEQKLISEEDLAANDILDYKDDDDKV

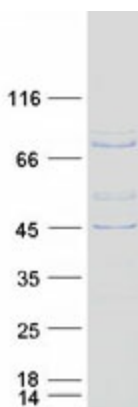
Tag:	C-Myc/DDK
Predicted MW:	77 kDa
Concentration:	>0.05 µg/µL as determined by microplate BCA method
Purity:	> 80% as determined by SDS-PAGE and Coomassie blue staining
Buffer:	25 mM Tris-HCl, 100 mM glycine, pH 7.3, 10% glycerol
Preparation:	Recombinant protein was captured through anti-DDK affinity column followed by conventional chromatography steps.
Note:	For testing in cell culture applications, please filter before use. Note that you may experience some loss of protein during the filtration process.



[View online »](#)

<b>Storage:</b>	Store at -80°C.
<b>Stability:</b>	Stable for 12 months from the date of receipt of the product under proper storage and handling conditions. Avoid repeated freeze-thaw cycles.
<b>RefSeq:</b>	<a href="#">NP_005480</a>
<b>Locus ID:</b>	10044
<b>UniProt ID:</b>	<a href="#">Q8N5H7</a>
<b>RefSeq Size:</b>	2692
<b>Cytogenetics:</b>	9q34.11
<b>RefSeq ORF:</b>	2109
<b>Synonyms:</b>	CHAT; NSP3; PRO34088; SHEP1
<b>Summary:</b>	This gene encodes an adaptor protein and member of a cytoplasmic protein family involved in cell migration. The encoded protein contains a putative Src homology 2 (SH2) domain and guanine nucleotide exchange factor-like domain which allows this signaling protein to form a complex with scaffolding protein Crk-associated substrate. Multiple transcript variants encoding different isoforms have been found for this gene. [provided by RefSeq, Nov 2011]
<b>Protein Families:</b>	Druggable Genome

### Product images:



Coomassie blue staining of purified SH2D3C protein (Cat# [TP306537]). The protein was produced from HEK293T cells transfected with SH2D3C cDNA clone (Cat# [RC206537]) using MegaTran 2.0 (Cat# [TT210002]).