

Product datasheet for **TP306524M**

PNLIPRP1 (NM_006229) Human Recombinant Protein

Product data:

Product Type: Recombinant Proteins

Description: Recombinant protein of human pancreatic lipase-related protein 1 (PNLIPRP1), 100 µg

Species: Human

Expression Host: HEK293T

**Expression cDNA Clone
or AA Sequence:** >RC206524 protein sequence
Red=Cloning site **Green**=Tags(s)

MLIFWTITLFLGAAKGKEVCYEDLGCFSDTEPWGGTAIRPLKILPWSPEKIGTRFLLYTNENPNNFQIL
LLSDPSTIEASNFQMDRKTRFIIHGFDKGDSEWVTD MCKKLFEVEEVNCICVDWKKGSQATYTTQAANNV
RVVGAQVAQMLDILLTEYSYPPSKVHLIGHSLGAHVAGEAGSKTPGLSRITGLDPVEASFESTPEEVRLD
PSDADFVDVIHTDAAPLIPFLGFGTNQQMGHLDFFPNGGESMPGCKKNALSQIVDLDDGIWAGTRDFVACN
HLRSYKYYLESILNPDGFAAYPCTSYKSFESDKCFPCPDQGPCQMGHYADKFAGRTSEEQQKFFLNTGEA
SNFARWRYGVSITLSGRTATGQIKVALFGNKGNT HQYSIFRGILKPGSTHSYEFDAKLDVGTIDKVKFLW
NNNVINPTLPKVGATKITVQKGEEKTVYNFCSEDTVREDTLLTLTPC

TRTRPLEQKLISEEDLAANDILDYKDDDDKV

Tag: C-Myc/DDK

Predicted MW: 49.9 kDa

Concentration: >0.05 µg/µL as determined by microplate BCA method

Purity: > 80% as determined by SDS-PAGE and Coomassie blue staining

Buffer: 25 mM Tris-HCl, 100 mM glycine, pH 7.3, 10% glycerol

Preparation: Recombinant protein was captured through anti-DDK affinity column followed by conventional chromatography steps.

Note: For testing in cell culture applications, please filter before use. Note that you may experience some loss of protein during the filtration process.

Storage: Store at -80°C.

Stability: Stable for 12 months from the date of receipt of the product under proper storage and handling conditions. Avoid repeated freeze-thaw cycles.

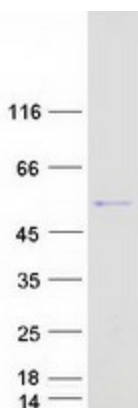
RefSeq: [NP_006220](#)



[View online »](#)

Locus ID:	5407
UniProt ID:	P54315
RefSeq Size:	1480
Cytogenetics:	10q25.3
RefSeq ORF:	1401
Synonyms:	PLRP1
Summary:	May function as inhibitor of dietary triglyceride digestion. Lacks detectable lipase activity towards triglycerides, diglycerides, phosphatidylcholine, galactolipids or cholesterol esters (in vitro) (By similarity).[UniProtKB/Swiss-Prot Function]
Protein Families:	Druggable Genome, Secreted Protein
Protein Pathways:	Glycerolipid metabolism, Metabolic pathways

Product images:



Coomassie blue staining of purified PNLIPRP1 protein (Cat# [TP306524]). The protein was produced from HEK293T cells transfected with PNLIPRP1 cDNA clone (Cat# [RC206524]) using MegaTran 2.0 (Cat# [TT210002]).