

## Product datasheet for **TP306524L**

### **PNLIPRP1 (NM\_006229) Human Recombinant Protein**

#### **Product data:**

**Product Type:** Recombinant Proteins

**Description:** Recombinant protein of human pancreatic lipase-related protein 1 (PNLIPRP1), 1 mg

**Species:** Human

**Expression Host:** HEK293T

**Expression cDNA Clone or AA Sequence:** >RC206524 protein sequence  
**Red**=Cloning site **Green**=Tags(s)

MLIFWTITLFLGAAKGKEVCYEDLGCFSDTEPWGGTAIRPLKILPWSPEKIGTRFLLYTNENPNNFQIL  
LLSDPSTIEASNFQMDRKTRFIIHGFDKGDSEWVTD MCKKLFEVEEVNCICVDWKKGSQATYTTQAANNV  
RVVGAQVAQMLDILLTEYSYPPSKVHLIGHSLGAHVAGEAGSKTPGLSRITGLDPVEASFESTPEEVRLD  
PSDADFVDVIHTDAAPLIPFLGFGTNQQMGHLDFFPNGGESMPGCKKNALSQIVDLDDGIWAGTRDFVACN  
HLRSYKYYLESILNPDGFAAYPCTSYKSFESDKCFPCPDQGCPQMGHYADKFAGRTSEEQQKFFLNTGEA  
SNFARWRYGVSITLSGRTATGQIKVALFGNKGNT HQYSIFRGILKPGSTHSYEFDAKLDVGTIDKVKFLW  
NNNVINPTLPKVGATKITVQKGEKTVYNFCSEDTVREDTLLTLTPC

**TRTRPLEQKLISEEDLAANDILDYKDDDDKV**

**Tag:** C-Myc/DDK

**Predicted MW:** 49.9 kDa

**Concentration:** >0.05 µg/µL as determined by microplate BCA method

**Purity:** > 80% as determined by SDS-PAGE and Coomassie blue staining

**Buffer:** 25 mM Tris-HCl, 100 mM glycine, pH 7.3, 10% glycerol

**Preparation:** Recombinant protein was captured through anti-DDK affinity column followed by conventional chromatography steps.

**Note:** For testing in cell culture applications, please filter before use. Note that you may experience some loss of protein during the filtration process.

**Storage:** Store at -80°C.

**Stability:** Stable for 12 months from the date of receipt of the product under proper storage and handling conditions. Avoid repeated freeze-thaw cycles.

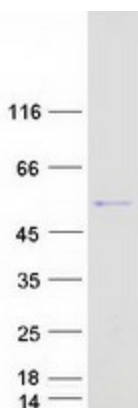
**RefSeq:** [NP\\_006220](#)



[View online >](#)

Locus ID:	5407
UniProt ID:	<a href="#">P54315</a>
RefSeq Size:	1480
Cytogenetics:	10q25.3
RefSeq ORF:	1401
Synonyms:	PLRP1
Summary:	May function as inhibitor of dietary triglyceride digestion. Lacks detectable lipase activity towards triglycerides, diglycerides, phosphatidylcholine, galactolipids or cholesterol esters (in vitro) (By similarity).[UniProtKB/Swiss-Prot Function]
Protein Families:	Druggable Genome, Secreted Protein
Protein Pathways:	Glycerolipid metabolism, Metabolic pathways

### Product images:



Coomassie blue staining of purified PNLIPRP1 protein (Cat# [TP306524]). The protein was produced from HEK293T cells transfected with PNLIPRP1 cDNA clone (Cat# [RC206524]) using MegaTran 2.0 (Cat# [TT210002]).