

Product datasheet for TP306524

PNLIPRP1 (NM_006229) Human Recombinant Protein

Product data:

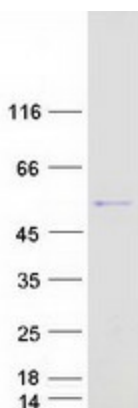
Product Type:	Recombinant Proteins
Description:	Recombinant protein of human pancreatic lipase-related protein 1 (PNLIPRP1), 20 µg
Species:	Human
Expression Host:	HEK293T
Expression cDNA Clone or AA Sequence:	>RC206524 protein sequence Red =Cloning site Green =Tags(s)
	<p>MLIFWTITLFLGAAKGKEVCYEDLGCFSDTEPWGGTAIRPLKILPWSPEKIGTRFLLYTNENPNNFQIL LLSDPSTIEASNFQMDRKTRFIIHGFDKGDSEWVTDKCKLFEVEEVNCICVDWKKGSQATYTTQAANNV RVVGAQVAQMLDILLTEYSYPPSKVHLIGHSLGAHVAGEAGSKTPGLSRITGLDPVEASFESTPEEVRLD PSDADFVDVIHTDAAPLIPFLGFGTNQQMGHLDFFPNGGESMPGCKKNALSQIVDLDDGIWAGTRDFVACN HLRSYKYYLESILNPDGFAAYPCTSYKSFESDKCFPCPDQGPCQMGHYADKFAGRTSEEQKFFLNTGEA SNFARWRYGVSITLSGRTATGQIKVALFGNKGNTHQYSIFRGILKPGSTHSYEFDAKLDVGTIDKVKFLW NNNVINPTLPKVGATKITVQKGEEKTVYNFCSEDTVREDTLLTLTPC</p> <p>TRTRPLEQKLISEEDLAANDILDYKDDDDKV</p>
Tag:	C-Myc/DDK
Predicted MW:	49.9 kDa
Concentration:	>0.05 µg/µL as determined by microplate BCA method
Purity:	> 80% as determined by SDS-PAGE and Coomassie blue staining
Buffer:	25 mM Tris-HCl, 100 mM glycine, pH 7.3, 10% glycerol
Preparation:	Recombinant protein was captured through anti-DDK affinity column followed by conventional chromatography steps.
Note:	For testing in cell culture applications, please filter before use. Note that you may experience some loss of protein during the filtration process.
Storage:	Store at -80°C.
Stability:	Stable for 12 months from the date of receipt of the product under proper storage and handling conditions. Avoid repeated freeze-thaw cycles.
RefSeq:	<u>NP_006220</u>



[View online »](#)

Locus ID:	5407
UniProt ID:	P54315
RefSeq Size:	1480
Cytogenetics:	10q25.3
RefSeq ORF:	1401
Synonyms:	PLRP1
Summary:	May function as inhibitor of dietary triglyceride digestion. Lacks detectable lipase activity towards triglycerides, diglycerides, phosphatidylcholine, galactolipids or cholesterol esters (in vitro) (By similarity).[UniProtKB/Swiss-Prot Function]
Protein Families:	Druggable Genome, Secreted Protein
Protein Pathways:	Glycerolipid metabolism, Metabolic pathways

Product images:



Coomassie blue staining of purified PNLIPRP1 protein (Cat# TP306524). The protein was produced from HEK293T cells transfected with PNLIPRP1 cDNA clone (Cat# [RC206524]) using MegaTran 2.0 (Cat# [TT210002]).