

Product datasheet for **TP306520M**

CGREF1 (NM_006569) Human Recombinant Protein

Product data:

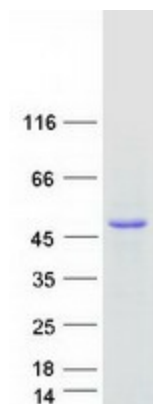
Product Type:	Recombinant Proteins
Description:	Recombinant protein of human cell growth regulator with EF-hand domain 1 (CGREF1), 100 µg
Species:	Human
Expression Host:	HEK293T
Expression cDNA Clone or AA Sequence:	>RC206520 protein sequence Red =Cloning site Green =Tags(s)
	<p>MLPLTMTVLILLLLPTGQAAPKDGVTRPDSEVQHQLLPNPFQPGQEQLGLLQSYLKGLGRTEVQLEHLR EQVLLYL FALHDYDQSGQLDGLELLSMLTAALAPGAANSPTTNPVILVDKVLETQDLNGDGLMTPAELI NFPGVALRHVEPGEPLAPSPQEPQAVGRQSLAKSPLRQETQEAPGPREEAKGQVEARRESLDPVQEPGG QAEADGDVPGPRGEAEGQAEAKGDAPGPRGEAGGQAEAEAGDAPGPRGEAGGQAEARENGEAAKELPGETL ESKNTQNDFEVHIVQVENDEI</p> <p>TRTRPLEQKLISEEDLAANDILDYKDDDDKV</p>
Tag:	C-Myc/DDK
Predicted MW:	33.3 kDa
Concentration:	>0.05 µg/µL as determined by microplate BCA method
Purity:	> 80% as determined by SDS-PAGE and Coomassie blue staining
Buffer:	25 mM Tris-HCl, 100 mM glycine, pH 7.3, 10% glycerol
Preparation:	Recombinant protein was captured through anti-DDK affinity column followed by conventional chromatography steps.
Note:	For testing in cell culture applications, please filter before use. Note that you may experience some loss of protein during the filtration process.
Storage:	Store at -80°C.
Stability:	Stable for 12 months from the date of receipt of the product under proper storage and handling conditions. Avoid repeated freeze-thaw cycles.
RefSeq:	NP_006560
Locus ID:	10669



[View online »](#)

UniProt ID:	Q99674
RefSeq Size:	1934
Cytogenetics:	2p23.3
RefSeq ORF:	903
Synonyms:	CGR11
Summary:	Mediates cell-cell adhesion in a calcium-dependent manner (By similarity). Able to inhibit growth in several cell lines.[UniProtKB/Swiss-Prot Function]

Product images:



Coomassie blue staining of purified CGREF1 protein (Cat# [TP306520]). The protein was produced from HEK293T cells transfected with CGREF1 cDNA clone (Cat# [RC206520]) using MegaTran 2.0 (Cat# [TT210002]).