

## Product datasheet for **TP306520**

### CGREF1 (NM\_006569) Human Recombinant Protein

#### Product data:

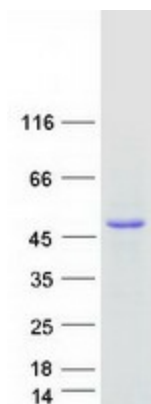
|                                       |  |
|---------------------------------------|--|
| Product Type:                         | Recombinant Proteins   |
| Description:                          | Recombinant protein of human cell growth regulator with EF-hand domain 1 (CGREF1), 20 µg   |
| Species:                              | Human  |
| Expression Host:                      | HEK293T  |
| Expression cDNA Clone or AA Sequence: | >RC206520 protein sequence<br><b>Red</b> =Cloning site <b>Green</b> =Tags(s)   |
|                                       | MLPLTMTVLILLLLPTGQAAPKDGVTVPDSEVQHQLLPNPFQPGQEQLGLLQSYLKGLGRTEVQLEHLSEQVLLYL FALHDYDQSGQLDGLLELLSMLTAALAPGAANSPTTNPVILVDKVLETQDLNGDGLMTPAELI NFPGVALRHVEPGEPLAPSPQEPQAVGRQSLAKSPLRQETQEAPGPREEAKGQVEARRESLDPVQEPGG QAEADGDVPGPRGEAEGQAEAKGDAPGPRGEAGGQAEAEAGDAPGPRGEAGGQAEARENGEEAKELPGETL ESKNTQNDFEVHIVQVENDEI |
|                                       | <b>TRTRPLEQKLISEEDLAANDILDYKDDDDKV</b>   |
| Tag:                                  | C-Myc/DDK  |
| Predicted MW:                         | 33.3 kDa   |
| Concentration:                        | >0.05 µg/µL as determined by microplate BCA method   |
| Purity:                               | > 80% as determined by SDS-PAGE and Coomassie blue staining  |
| Buffer:                               | 25 mM Tris-HCl, 100 mM glycine, pH 7.3, 10% glycerol   |
| Preparation:                          | Recombinant protein was captured through anti-DDK affinity column followed by conventional chromatography steps.   |
| Note:                                 | For testing in cell culture applications, please filter before use. Note that you may experience some loss of protein during the filtration process.   |
| Storage:                              | Store at -80°C.  |
| Stability:                            | Stable for 12 months from the date of receipt of the product under proper storage and handling conditions. Avoid repeated freeze-thaw cycles.  |
| RefSeq:                               | <a href="#">NP_006560</a>  |
| Locus ID:                             | 10669  |



[View online »](#)

|               |   |
|---------------|---|
| UniProt ID:   | <a href="#">Q99674</a>  |
| RefSeq Size:  | 1934  |
| Cytogenetics: | 2p23.3  |
| RefSeq ORF:   | 903   |
| Synonyms:     | CGR11   |
| Summary:      | Mediates cell-cell adhesion in a calcium-dependent manner (By similarity). Able to inhibit growth in several cell lines.[UniProtKB/Swiss-Prot Function] |

### Product images:



Coomassie blue staining of purified CGREF1 protein (Cat# TP306520). The protein was produced from HEK293T cells transfected with CGREF1 cDNA clone (Cat# [RC206520]) using MegaTran 2.0 (Cat# [TT210002]).