

## Product datasheet for **TP306518L**

### RFPL3 (NM\_006604) Human Recombinant Protein

#### Product data:

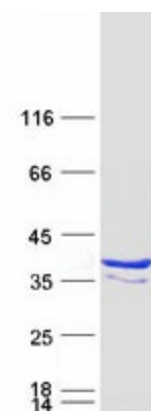
Product Type:	Recombinant Proteins
Description:	Recombinant protein of human ret finger protein-like 3 (RFPL3), transcript variant 2, 1 mg
Species:	Human
Expression Host:	HEK293T
Expression cDNA Clone or AA Sequence:	>RC206518 protein sequence <b>Red</b> =Cloning site <b>Green</b> =Tags(s)
	 MAALFQEASSCPVCSYLEKPMSELCGCTVCLKCINSLQKEPHGEDLLCCCCSMVSQRNKIRPNRQLERL VSHIKELEPKMKKILQMNPRMRKFQVDMTLDADTANNFLISDDLRSVRSGLITQNRQDLAERFDVSVC LGSPRFTCGRHYWEVDVGTSTEWDLGVCRESVHCKGKIQLTTELGFWTVSLRDGSRLSASTVPLTFL LVD RKLQRVGIFLDMGMQNVFFDAESGSHVYTFRSVSAEELRPFLAPSIPPNGDQGVLSICPLMNSGTTDA PVRPGEAK  <b>TRTRPLEQKLISEEDLAANDILDYKDDDDKV</b>
Tag:	C-Myc/DDK
Predicted MW:	32 kDa
Concentration:	>0.05 µg/µL as determined by microplate BCA method
Purity:	> 80% as determined by SDS-PAGE and Coomassie blue staining
Buffer:	25 mM Tris-HCl, 100 mM glycine, pH 7.3, 10% glycerol
Preparation:	Recombinant protein was captured through anti-DDK affinity column followed by conventional chromatography steps.
Note:	For testing in cell culture applications, please filter before use. Note that you may experience some loss of protein during the filtration process.
Storage:	Store at -80°C.
Stability:	Stable for 12 months from the date of receipt of the product under proper storage and handling conditions. Avoid repeated freeze-thaw cycles.
RefSeq:	<u><a href="#">NP_006595</a></u>
Locus ID:	10738



[View online »](#)

UniProt ID:	<a href="#">O75679</a>
RefSeq Size:	1214
Cytogenetics:	22q12.3
RefSeq ORF:	864
Synonyms:	RNF120
Summary:	(Microbial infection) Stimulates the activity of Human Immunodeficiency Virus 1/HIV-1 pre-integration complex.[UniProtKB/Swiss-Prot Function]
Protein Families:	Druggable Genome

### Product images:



Coomassie blue staining of purified RFPL3 protein (Cat# [TP306518]). The protein was produced from HEK293T cells transfected with RFPL3 cDNA clone (Cat# [RC206518]) using MegaTran 2.0 (Cat# [TT210002]).