

Product datasheet for **TP306472M**

CYP2W1 (NM_017781) Human Recombinant Protein

Product data:

Product Type: Recombinant Proteins

Description: Recombinant protein of human cytochrome P450, family 2, subfamily W, polypeptide 1 (CYP2W1), 100 µg

Species: Human

Expression Host: HEK293T

Expression cDNA Clone or AA Sequence: >RC206472 protein sequence
Red=Cloning site **Green**=Tags(s)

MALLLLLFLGLLGLWGLLCACAQDPSPAARWPPGPRPLPLVGNLHLLRLSQQDRSLMELSERYGPVFTVH
LGRQKTVVLTGFEAVKEALAGPGQELADRPPIAIFQLIQRGGGIFSSGARWRAARQFTVRALHSLGVGR
EPVADKILQELKCLSGQLDGYRGRPFPLALLGWAPSNITFALLFGRRFDYRDPVFSLLGLIDEVMVLLG
SPGLQLFNVPWLGALLQLHRPVLRKIEEVRAILRTLLEARRPHVCPGDPVCSYVDALIQGGQDDEPEGL
FAEANAVACTLDMVMAGTETTSATLQWAALLMGRHPDVQGRVQEELDRVLGPGRTPRLEDQQALPYTSAV
LHEVQRFITLLPHVPRCTAADTQLGGFLLPKGTPVIPLLSVLLDETQWQTPGQFNPGFHLDANGHFVKR
EAFLPFSAGRRVCVGERLARTELFLLFAGLLQRYRLLPPPVGSPASLDTTPARAFTMRPRAQALCAVPRP

TRTRPLEQKLISEEDLAANDILDYKDDDDKV

Tag: C-Myc/DDK

Predicted MW: 53.7 kDa

Concentration: >0.05 µg/µL as determined by microplate BCA method

Purity: > 80% as determined by SDS-PAGE and Coomassie blue staining

Buffer: 25 mM Tris-HCl, 100 mM glycine, pH 7.3, 10% glycerol

Preparation: Recombinant protein was captured through anti-DDK affinity column followed by conventional chromatography steps.

Note: For testing in cell culture applications, please filter before use. Note that you may experience some loss of protein during the filtration process.

Storage: Store at -80°C.

Stability: Stable for 12 months from the date of receipt of the product under proper storage and handling conditions. Avoid repeated freeze-thaw cycles.



[View online »](#)

RefSeq: [NP_060251](#)

Locus ID: 54905

UniProt ID: [Q8TAV3](#)

RefSeq Size: 2354

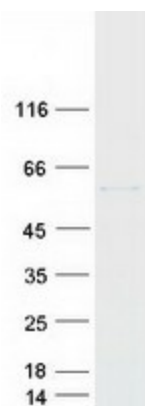
Cytogenetics: 7p22.3

RefSeq ORF: 1470

Summary: This gene encodes a member of the cytochrome P450 superfamily of enzymes. The cytochrome P450 proteins are monooxygenases which catalyze many reactions involved in drug metabolism and synthesis of cholesterol, steroids and other lipids. [provided by RefSeq, Jul 2008]

Protein Families: Druggable Genome, P450

Product images:



Coomassie blue staining of purified CYP2W1 protein (Cat# [TP306472]). The protein was produced from HEK293T cells transfected with CYP2W1 cDNA clone (Cat# [RC206472]) using MegaTran 2.0 (Cat# [TT210002]).