

## Product datasheet for TP306472

### CYP2W1 (NM\_017781) Human Recombinant Protein

#### Product data:

**Product Type:** Recombinant Proteins

**Description:** Recombinant protein of human cytochrome P450, family 2, subfamily W, polypeptide 1 (CYP2W1), 20 µg

**Species:** Human

**Expression Host:** HEK293T

**Expression cDNA Clone or AA Sequence:** >RC206472 protein sequence  
Red=Cloning site Green=Tags(s)

MALLLLLFLGLLGLWGLLCACAQDPSPAARWPPGPRPLPLVGNLHLLRLSQQDRSLMELSERYGPVFTVH  
LGRQKTVVLTGFVAVKEALAGPGQELADRPPIAIFQLIQRGGGIFSSGARWRAARQFTVRALHSLGVGR  
EPVADKILQELKCLSGQLDGYRGRPFPLALLGWAPSNITFALLFGRRFDYRDPVFSLLGLIDEVMVLLG  
SPGLQLFNVPWLGALLQLHRPVLRKIEEVRAILRTLLEARRPHVCPGDPVCSYVDALIQGGQDDEPEGL  
FAEANAVALDMLMAGTETTSATLQWAALLMGRHPDVQGRVQEELDRVLGPGRTPRLEDQALPYTSVAV  
LHEVQRFITLLPHVPRCTAADTQLGGFLLPKGTPVIPLLSVLLDETQWQTPGQFNPGFHLDANGHFVVKR  
EAFLPFSAGRRVCVGERLARTELFLLFAGLLQRYRLLPPPGVSPASLDTTPARAFTMRPRAQALCAVPRP

TRTRPLEQKLISEEDLAANDILDYKDDDDKV

**Tag:** C-Myc/DDK

**Predicted MW:** 53.7 kDa

**Concentration:** >0.05 µg/µL as determined by microplate BCA method

**Purity:** > 80% as determined by SDS-PAGE and Coomassie blue staining

**Buffer:** 25 mM Tris-HCl, 100 mM glycine, pH 7.3, 10% glycerol

**Preparation:** Recombinant protein was captured through anti-DDK affinity column followed by conventional chromatography steps.

**Note:** For testing in cell culture applications, please filter before use. Note that you may experience some loss of protein during the filtration process.

**Storage:** Store at -80°C.

**Stability:** Stable for 12 months from the date of receipt of the product under proper storage and handling conditions. Avoid repeated freeze-thaw cycles.



[View online >](#)

RefSeq: [NP\\_060251](#)

Locus ID: 54905

UniProt ID: [Q8TAV3](#)

RefSeq Size: 2354

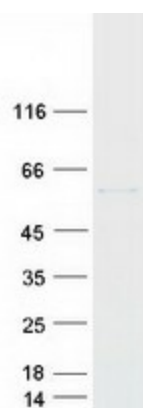
Cytogenetics: 7p22.3

RefSeq ORF: 1470

**Summary:** This gene encodes a member of the cytochrome P450 superfamily of enzymes. The cytochrome P450 proteins are monooxygenases which catalyze many reactions involved in drug metabolism and synthesis of cholesterol, steroids and other lipids. [provided by RefSeq, Jul 2008]

**Protein Families:** Druggable Genome, P450

### Product images:



Coomassie blue staining of purified CYP2W1 protein (Cat# TP306472). The protein was produced from HEK293T cells transfected with CYP2W1 cDNA clone (Cat# [RC206472]) using MegaTran 2.0 (Cat# [TT210002]).