

## Product datasheet for **TP306467**

### **C1orf183 (FAM212B) (NM\_019099) Human Recombinant Protein**

#### Product data:

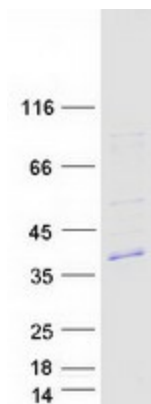
Product Type:	Recombinant Proteins
Description:	Recombinant protein of human chromosome 1 open reading frame 183 (C1orf183), transcript variant 1, 20 µg
Species:	Human
Expression Host:	HEK293T
Expression cDNA Clone or AA Sequence:	>RC206467 protein sequence <b>Red</b> =Cloning site <b>Green</b> =Tags(s)
	MTMESREMDCYLRRLLKQELMSMKEVGDGLQDQMNCMMGALQELKLLQVQTALQLEISGGGPVPGSPEGP RTQCEHPCWEGGRGPAPRTVCSPSSQPSLGSSTKFPSHRVCGRDLAPLPRTQPHQSCAQGGPERVEPDD WTSTLMSRGRNRQPLVLGDNVFDLVGNWLDLPELEKGGEKGETGGAREPKGEKGQPQELGRRFALTANI FKKFLRSVRPDRDRLLKEKPGWVTPMVESRTGRSQVKVKRSLSKGSGHFPFPGTGEHRRGENPPTSCPK ALEHSPSGFDINTAVVW
	<b>TR</b> TRPLE <b>QKLISEEDLAANDILDYKDDDDKV</b>
Tag:	C-Myc/DDK
Predicted MW:	32.6 kDa
Concentration:	>0.05 µg/µL as determined by microplate BCA method
Purity:	> 80% as determined by SDS-PAGE and Coomassie blue staining
Buffer:	25 mM Tris-HCl, 100 mM glycine, pH 7.3, 10% glycerol
Preparation:	Recombinant protein was captured through anti-DDK affinity column followed by conventional chromatography steps.
Note:	For testing in cell culture applications, please filter before use. Note that you may experience some loss of protein during the filtration process.
Storage:	Store at -80°C.
Stability:	Stable for 12 months from the date of receipt of the product under proper storage and handling conditions. Avoid repeated freeze-thaw cycles.
RefSeq:	<u><a href="#">NP_061972</a></u>
Locus ID:	55924



[View online »](#)

UniProt ID:	<u>Q9NTI7</u>
RefSeq Size:	5980
Cytogenetics:	1p13.2
RefSeq ORF:	891
Synonyms:	C1orf183; FAM212B
Summary:	Inhibitor of the serine/threonine-protein kinase PAK4. Acts by binding PAK4 in a substrate-like manner, inhibiting the protein kinase activity.[UniProtKB/Swiss-Prot Function]

### Product images:



Coomassie blue staining of purified INKA2 protein (Cat# TP306467). The protein was produced from HEK293T cells transfected with INKA2 cDNA clone (Cat# [RC206467]) using MegaTran 2.0 (Cat# [TT210002]).