

## Product datasheet for **TP306449M**

### MYL7 (NM\_021223) Human Recombinant Protein

#### Product data:

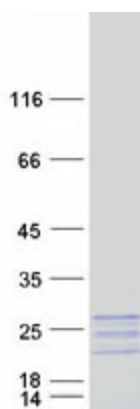
Product Type:	Recombinant Proteins
Description:	Recombinant protein of human myosin, light chain 7, regulatory (MYL7), 100 µg
Species:	Human
Expression Host:	HEK293T
Expression cDNA Clone or AA Sequence:	>RC206449 protein sequence <b>Red</b> =Cloning site <b>Green</b> =Tags(s)
	MASRKAGTRGKVAATKQAQRGSSNVFSMFEQAQIQEFKEAFSCIDQNRDGIICKADLRETYSQLGKVSVP EEELDAMLQEGKGPINFTVFLTLFGEKLNKTDPEEAILSARFMFDPSGKGWVNKDEFKQLLLTQADKFSF AEVEQMFALTPMDLAGNIDYKSLCYIITHGDEKEE
	<b>TRTRPLEQKLISEEDLAANDILDYKDDDDKV</b>
Tag:	C-Myc/DDK
Predicted MW:	19.3 kDa
Concentration:	>0.05 µg/µL as determined by microplate BCA method
Purity:	> 80% as determined by SDS-PAGE and Coomassie blue staining
Buffer:	25 mM Tris-HCl, 100 mM glycine, pH 7.3, 10% glycerol
Preparation:	Recombinant protein was captured through anti-DDK affinity column followed by conventional chromatography steps.
Note:	For testing in cell culture applications, please filter before use. Note that you may experience some loss of protein during the filtration process.
Storage:	Store at -80°C.
Stability:	Stable for 12 months from the date of receipt of the product under proper storage and handling conditions. Avoid repeated freeze-thaw cycles.
RefSeq:	<a href="#">NP_067046</a>
Locus ID:	58498
UniProt ID:	<a href="#">Q01449</a>
RefSeq Size:	619



[View online »](#)

Cytogenetics:	7p13
RefSeq ORF:	525
Synonyms:	MYL2A; MYLC2A
Protein Families:	Druggable Genome
Protein Pathways:	Focal adhesion, Leukocyte transendothelial migration, Regulation of actin cytoskeleton, Tight junction

### Product images:



Coomassie blue staining of purified MYL7 protein (Cat# [TP306449]). The protein was produced from HEK293T cells transfected with MYL7 cDNA clone (Cat# [RC206449]) using MegaTran 2.0 (Cat# [TT210002]).