

Product datasheet for TP306445M

SERPINI2 (NM_006217) Human Recombinant Protein

Product data:

| | |
|---------------------------------------|---|
| Product Type: | Recombinant Proteins |
| Description: | Recombinant protein of human serpin peptidase inhibitor, clade I (pancpin), member 2 (SERPINI2), 100 µg |
| Species: | Human |
| Expression Host: | HEK293T |
| Expression cDNA Clone or AA Sequence: | >RC206445 protein sequence Red=Cloning site Green=Tags(s) |

MIQNLMMREVKMDTIFLWSLLLLFFGSQASRCSAQKNTFAVDLYQEVLSHKDNIIFSPGLGITLVLEMVQ
LGAKGKAQQQIRQTLKQQETSAGEEFFVLKSFSAISEKKQEFTFNLANALYLQEGFTVKEQYLHGNKEF
FQSAIKLVDFQDAKACAEMISTWVERKTDGKIKDMFSGEEFGPLTRLVLVNAIYFKGDWKQKFRKEDTQL
INFTKKNGSTVKIPMMKALLRRTKYGYFSESSLNYQVLELSYKGFDEFSLIIILPAEGMDIEEVEKLITAAQQ
ILKWLSEMQEEVEISLPRFKVEQKVDKDLVLSLNYLITEIFSGGCDLSGITDSSEVVYSQVTQKVFVEIN
EDGSEAAATSTGIHIPVIMSLAQSQFIANHPFLFIMKHNPTESILFMGRVTNPDTQEIKGRDLDSL

TRTRPLEQKLISEEDLAANDILDYKDDDDKV

| | |
|----------------|--|
| Tag: | C-Myc/DDK |
| Predicted MW: | 46 kDa |
| Concentration: | >0.05 µg/µL as determined by microplate BCA method |
| Purity: | > 80% as determined by SDS-PAGE and Coomassie blue staining |
| Buffer: | 25 mM Tris-HCl, 100 mM glycine, pH 7.3, 10% glycerol |
| Preparation: | Recombinant protein was captured through anti-DDK affinity column followed by conventional chromatography steps. |
| Note: | For testing in cell culture applications, please filter before use. Note that you may experience some loss of protein during the filtration process. |
| Storage: | Store at -80°C. |
| Stability: | Stable for 12 months from the date of receipt of the product under proper storage and handling conditions. Avoid repeated freeze-thaw cycles. |
| RefSeq: | <u>NP_006208</u> |



[View online »](#)

Locus ID: 5276

UniProt ID: [O75830](#), [A0A0C4DGW9](#), [B4DDY9](#)

RefSeq Size: 1678

Cytogenetics: 3q26.1

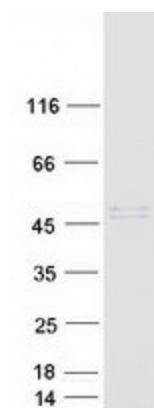
RefSeq ORF: 1248

Synonyms: MEPI; PANCPIN; PI14; TSA2004

Summary: The gene encodes a member of a family of proteins that acts as inhibitors of serine proteases. These proteins function in the regulation of a variety of physiological processes, including coagulation, fibrinolysis, development, malignancy, and inflammation. Expression of the encoded protein may be downregulated during pancreatic carcinogenesis. Alternative splicing results in multiple transcript variants for this gene. [provided by RefSeq, Jan 2013]

Protein Families: Druggable Genome, Secreted Protein

Product images:



Coomassie blue staining of purified SERPINI2 protein (Cat# [TP306445]). The protein was produced from HEK293T cells transfected with SERPINI2 cDNA clone (Cat# [RC206445]) using MegaTran 2.0 (Cat# [TT210002]).