

Product datasheet for TP306445

SERPINI2 (NM_006217) Human Recombinant Protein

Product data:

Product Type:	Recombinant Proteins
Description:	Recombinant protein of human serpin peptidase inhibitor, clade I (pancpin), member 2 (SERPINI2), 20 µg
Species:	Human
Expression Host:	HEK293T
Expression cDNA Clone or AA Sequence:	>RC206445 protein sequence Red=Cloning site Green=Tags(s)

MIQNLMMREVKMDTIFLWSLLLLFFGSQASRCSAQKNTFAVDLYQEVSLSHKDNIIIFSPGLGITLVLEMVQ
LGAKGKAQQQIRQTLKQQETSAGEEFFVLKSFSAISEKKQEFTFNLANALYLQEGFTVKEQYLHGNKEF
FQSAIKLVDFQDAKACAEMISTWVERKTDGKIKDMFSGEEFGPLTRLVLVNAIYFKGDWKQKFRKEDTQL
INFTKKNGSTVKIPMMKALLRRTKYGYFSESSLNYQVLELSYKGFDEFSLIIILPAEGMDIEEVEKLITAAQQ
ILKWLSEMQEEVEISLPRFKVEQKVDKDLVLSLNITEIFSGGCDLSGITDSSEVVYSQVTQKVFFEIN
EDGSEAAATSTGIHIPVIMSLAQSQFIANHPFLFIMKHNPTESILFMGRVTNPDTQEIKGRDLDSL

TRTRPLEQKLISEEDLAANDILDYKDDDDKV

Tag:	C-Myc/DDK
Predicted MW:	46 kDa
Concentration:	>0.05 µg/µL as determined by microplate BCA method
Purity:	> 80% as determined by SDS-PAGE and Coomassie blue staining
Buffer:	25 mM Tris-HCl, 100 mM glycine, pH 7.3, 10% glycerol
Preparation:	Recombinant protein was captured through anti-DDK affinity column followed by conventional chromatography steps.
Note:	For testing in cell culture applications, please filter before use. Note that you may experience some loss of protein during the filtration process.
Storage:	Store at -80°C.
Stability:	Stable for 12 months from the date of receipt of the product under proper storage and handling conditions. Avoid repeated freeze-thaw cycles.
RefSeq:	NP_006208



[View online »](#)

Locus ID: 5276

UniProt ID: [O75830](#), [A0A0C4DGW9](#), [B4DDY9](#)

RefSeq Size: 1678

Cytogenetics: 3q26.1

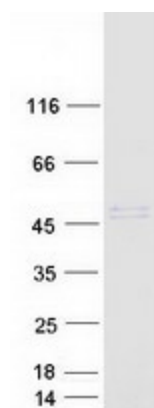
RefSeq ORF: 1248

Synonyms: MEPI; PANCPIN; PI14; TSA2004

Summary: The gene encodes a member of a family of proteins that acts as inhibitors of serine proteases. These proteins function in the regulation of a variety of physiological processes, including coagulation, fibrinolysis, development, malignancy, and inflammation. Expression of the encoded protein may be downregulated during pancreatic carcinogenesis. Alternative splicing results in multiple transcript variants for this gene. [provided by RefSeq, Jan 2013]

Protein Families: Druggable Genome, Secreted Protein

Product images:



Coomassie blue staining of purified SERPINI2 protein (Cat# TP306445). The protein was produced from HEK293T cells transfected with SERPINI2 cDNA clone (Cat# [RC206445]) using MegaTran 2.0 (Cat# [TT210002]).