

Product datasheet for TP306439M

LAIR1 (NM_002287) Human Recombinant Protein

Product data:

Product Type:	Recombinant Proteins
Description:	Recombinant protein of human leukocyte-associated immunoglobulin-like receptor 1 (LAIR1), transcript variant a, 100 µg
Species:	Human
Expression Host:	HEK293T
Expression cDNA Clone or AA Sequence:	>RC206439 protein sequence Red =Cloning site Green =Tags(s)

MSPHPTALLGLVLCLAQTIHTQEEDLPRPSISAEPGTVIPLGSHVTFVCRGPVGVQTFRLERESRSTYND
TEDVSQASPSESEARFRIDSVSEGNAGPYRCIYYKPPKWSEQSDYLELLVKETSGGPDSPDTEPGSSAGP
TQRPSDNSHNEHAPASQGLKAEHLYILIGSVWFLFCLLLLVLFLHRQNQIKQGPPRSKDDEEQKPQQR
DLAVDVLERTADKATVNGLEPKDRETDTSALAAGSSQEVTYAQLDHWALTQRTARAVSPQSTKPMASIT
YAAVARH

TRTRPLEQKLISEEDLAANDILDYKDDDDKV

Tag:	C-Myc/DDK
Predicted MW:	31.2 kDa
Concentration:	>0.05 µg/µL as determined by microplate BCA method
Purity:	> 80% as determined by SDS-PAGE and Coomassie blue staining
Buffer:	25 mM Tris-HCl, 100 mM glycine, pH 7.3, 10% glycerol
Preparation:	Recombinant protein was captured through anti-DDK affinity column followed by conventional chromatography steps.
Note:	For testing in cell culture applications, please filter before use. Note that you may experience some loss of protein during the filtration process.
Storage:	Store at -80°C.
Stability:	Stable for 12 months from the date of receipt of the product under proper storage and handling conditions. Avoid repeated freeze-thaw cycles.
RefSeq:	NP_002278
Locus ID:	3903



[View online »](#)

UniProt ID: [Q6GTX8](#)

RefSeq Size: 2818

Cytogenetics: 19q13.42

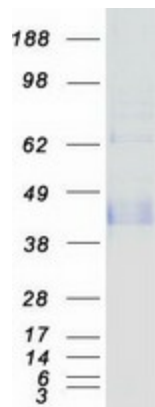
RefSeq ORF: 861

Synonyms: CD305; LAIR-1

Summary: The protein encoded by this gene is an inhibitory receptor found on peripheral mononuclear cells, including natural killer cells, T cells, and B cells. Inhibitory receptors regulate the immune response to prevent lysis of cells recognized as self. The gene is a member of both the immunoglobulin superfamily and the leukocyte-associated inhibitory receptor family. The gene maps to a region of 19q13.4 called the leukocyte receptor cluster, which contains at least 29 genes encoding leukocyte-expressed receptors of the immunoglobulin superfamily. The encoded protein has been identified as an anchor for tyrosine phosphatase SHP-1, and may induce cell death in myeloid leukemias. Alternative splicing results in multiple transcript variants. [provided by RefSeq, Jan 2014]

Protein Families: Transmembrane

Product images:



Coomassie blue staining of purified LAIR1 protein (Cat# [TP306439]). The protein was produced from HEK293T cells transfected with LAIR1 cDNA clone (Cat# [RC206439]) using MegaTran 2.0 (Cat# [TT210002]).