

## Product datasheet for TP306435L

### Alpha 2 Antiplasmin (SERPINF2) (NM\_000934) Human Recombinant Protein

#### Product data:

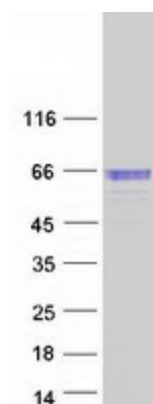
Product Type:	Recombinant Proteins
Description:	Recombinant protein of human serpin peptidase inhibitor, clade F (alpha-2 antiplasmin, pigment epithelium derived factor), member 2 (SERPINF2), 1 mg
Species:	Human
Expression Host:	HEK293T
Expression cDNA Clone or AA Sequence:	>RC206435 protein sequence <b>Red</b> =Cloning site <b>Green</b> =Tags(s)
	<p>MVLLWGLLVLSWSC LQGPCSVFSPVSAMEPLGRQLTSGPNQEQVSPLTLLKLG NQEPGGQTALKSPPGVC SRDPTPEQTHRLARAMMAFTADL FSLVAQTSTCPNLILSPLSVALALSHLALGAQNHTLQRLQQVLHAGS GPCLPHELLSRLCQDLGPGAFRLAARMYLQKGFPIKEDFLEQSEQLFGAKPVSLT GKQEDDLANINQWVKE ATEGKIQEFLSGLPEDTVLLLLN AIHFQGFWRNKFDPSLTQRDSFHLDEQFTVPVEMMQARTYPLRWFL EQPEIQVAHFPPKNNMSFVVLV PTHFEWNVSQVLANLSWDTLHPPLVWERPTKVRLPKLYLKHQMDLVAT LSQLGLQELFQAPDLRGISEQSLV SVGVQHQSTLESEVGV EAAAATSIAMSRMSLSSFSVNRPF LFFIF EDTTGLPLFVGSVRNPNPSAPRELKEQQDSPGNKDFLQSLKGFPRGDKLFGPDLKLVPPMEEDYPQFGSP K</p> <p><b>TRTRPLEQKLISEEDLAANDILDYKDDDDK</b></p>
Tag:	C-Myc/DDK
Predicted MW:	51.7 kDa
Concentration:	>0.05 µg/µL as determined by microplate BCA method
Purity:	> 80% as determined by SDS-PAGE and Coomassie blue staining
Buffer:	25 mM Tris-HCl, 100 mM glycine, pH 7.3, 10% glycerol
Preparation:	Recombinant protein was captured through anti-DDK affinity column followed by conventional chromatography steps.
Note:	For testing in cell culture applications, please filter before use. Note that you may experience some loss of protein during the filtration process.
Storage:	Store at -80°C.



[View online »](#)

<b>Stability:</b>	Stable for 12 months from the date of receipt of the product under proper storage and handling conditions. Avoid repeated freeze-thaw cycles.
<b>RefSeq:</b>	<a href="#">NP_000925</a>
<b>Locus ID:</b>	5345
<b>UniProt ID:</b>	<a href="#">P08697</a>
<b>RefSeq Size:</b>	2284
<b>Cytogenetics:</b>	17p13.3
<b>RefSeq ORF:</b>	1473
<b>Synonyms:</b>	A2AP; AAP; ALPHA-2-PI; alpha2AP; API; PLI
<b>Summary:</b>	This gene encodes a member of the serpin family of serine protease inhibitors. The protein is a major inhibitor of plasmin, which degrades fibrin and various other proteins. Consequently, the proper function of this gene has a major role in regulating the blood clotting pathway. Mutations in this gene result in alpha-2-plasmin inhibitor deficiency, which is characterized by severe hemorrhagic diathesis. Multiple transcript variants encoding different isoforms have been found for this gene. [provided by RefSeq, Sep 2009]
<b>Protein Families:</b>	Druggable Genome, Secreted Protein
<b>Protein Pathways:</b>	Complement and coagulation cascades

### Product images:



Coomassie blue staining of purified SERPINF2 protein (Cat# [TP306435]). The protein was produced from HEK293T cells transfected with SERPINF2 cDNA clone (Cat# [RC206435]) using MegaTran 2.0 (Cat# [TT210002]).