

Product datasheet for TP306407

GMEB2 (NM_012384) Human Recombinant Protein

Product data:

Product Type:	Recombinant Proteins
Description:	Recombinant protein of human glucocorticoid modulatory element binding protein 2 (GMEB2), 20 µg
Species:	Human
Expression Host:	HEK293T
Expression cDNA Clone or AA Sequence:	>RC206407 representing NM_012384 Red=Cloning site Green=Tags(s)

MATPDVSVHMEEVWVWTPDTAVDGSVGEVKTVLVTTNLAPHGGDLTEDNMETENAAAAAAAAAFTASSQ
LKEAVLVKMAEEGENLEAEIVYPITCGDSRANLIWRKFVCPGINVKCVQYDEHVISPKFVHLAGKSTLK
DWKRAIRMNGIMLRKIMDSGELDFYQHDKVCSNTRSTKIDLSGARVSLSSPTSAEYIPLTPAAADVNGS
PATITIECEDPGDWTAAGDDTFTWRGLKDAGLLDEVIQEFHQELVETMRGLQQRVQDPPLQLRDAVL
LNNIVQNFGLDLVKKVLASHKCMQRSREYARDLAALAEQQCDEHRRRAKELKHKSQHLSNVLMTLTPV
SLPPPVKRPRLARATSGPAAMASQVLTQSAQLALGPGVPPQLTSVPLGKVVSTLPSTVLGKGSQAPPA
SSPASPLGGYTVLASSGSTYPSTVEIHPDASLTLVSTAAVQDGSTVFKVVSPLQLLTLPLGLPTLQNV
AQASPGSSTIVTPAGAAPGPEEHTATIEVAAMAEDHERK

SGPTRRRRLEQKLISEEDLAANDILDYKDDDDKV

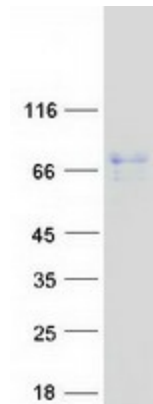
Tag:	C-Myc/DDK
Predicted MW:	56.2 kDa
Concentration:	>0.05 µg/µL as determined by microplate BCA method
Purity:	> 80% as determined by SDS-PAGE and Coomassie blue staining
Buffer:	25 mM Tris-HCl, 100 mM glycine, pH 7.3, 10% glycerol
Preparation:	Recombinant protein was captured through anti-DDK affinity column followed by conventional chromatography steps.
Note:	For testing in cell culture applications, please filter before use. Note that you may experience some loss of protein during the filtration process.
Storage:	Store at -80°C.



[View online »](#)

Stability:	Stable for 12 months from the date of receipt of the product under proper storage and handling conditions. Avoid repeated freeze-thaw cycles.
RefSeq:	NP_036516
Locus ID:	26205
UniProt ID:	Q9UKD1 , B4DQ50
RefSeq Size:	4559
Cytogenetics:	20q13.33
RefSeq ORF:	1590
Synonyms:	GMEB-2; P79PIF; PIF79
Summary:	This gene is a member of KDWK gene family. The product of this gene associates with GMEB1 protein, and the complex is essential for parvovirus DNA replication. Study of rat homolog implicates the role of this gene in modulation of transactivation by the glucocorticoid receptor bound to glucocorticoid response elements. This gene appears to use multiple polyadenylation sites. [provided by RefSeq, Jul 2008]
Protein Families:	Druggable Genome, Transcription Factors

Product images:



Coomassie blue staining of purified GMEB2 protein (Cat# TP306407). The protein was produced from HEK293T cells transfected with GMEB2 cDNA clone (Cat# [RC206407]) using MegaTran 2.0 (Cat# [TT210002]).