

Product datasheet for TP306406M

CPEB1 (NM_001079535) Human Recombinant Protein

Product data:

Product Type: Recombinant Proteins

Description: Recombinant protein of human cytoplasmic polyadenylation element binding protein 1 (CPEB1), transcript variant 3, 100 µg

Species: Human

Expression Host: HEK293T

Expression cDNA Clone or AA Sequence: >RC206406 protein sequence
Red=Cloning site Green=Tags(s)

MLFPTSAQESSRGLPDANDLCLGLQSLSLTGWDRPWSTQSDSSAQSSTHSVLSMLHNPLGNVLGKPPLS
FLPLDPLGSDLVDKFPAPSVRGSRLDTRPILDSRSSSPSDSDTSGFSSGSDHLSLISLRISPLPFLS
LSGGGPRDPLKMGVGSRMDQEQAALAAVTPSPTSASKRWPGASVWPSWDLLEAPKDPFSIEREARLHRQA
AAVNEATCTWSGQLPPRNYKNPIYSCKVFLGGVPWDITEAGLVNTRFVFGSLVSEVWPGKDGKHPRCPPKG
YVYLVFELEKSVRSLLQACSHDPLSPDGLSEYFKMSRRMRCKEVQVIPWVLADSNFVRSQRLDPSR
TVFVGALHGMLNAEALAILNDLFGGVYAGIDTDKHKYPIGSGRVTFNNQRSYLKAVSAAFVEIKTTKF
TKKVQIDPYLEDLSLCHICSSQPGPFRCRDQVCFKYFCRSCWHWRHSMEGLRHHSPLMRNQKNRDSS

TRTRPLEQKLISEEDLAANDILDYKDDDDKV

Tag: C-Myc/DDK

Predicted MW: 53.5 kDa

Concentration: >0.05 µg/µL as determined by microplate BCA method

Purity: > 80% as determined by SDS-PAGE and Coomassie blue staining

Buffer: 25 mM Tris-HCl, 100 mM glycine, pH 7.3, 10% glycerol

Preparation: Recombinant protein was captured through anti-DDK affinity column followed by conventional chromatography steps.

Note: For testing in cell culture applications, please filter before use. Note that you may experience some loss of protein during the filtration process.

Storage: Store at -80°C.

Stability: Stable for 12 months from the date of receipt of the product under proper storage and handling conditions. Avoid repeated freeze-thaw cycles.



[View online »](#)

RefSeq: [NP_001073003](#)

Locus ID: 64506

UniProt ID: [Q9BZB8](#)

RefSeq Size: 3196

Cytogenetics: 15q25.2

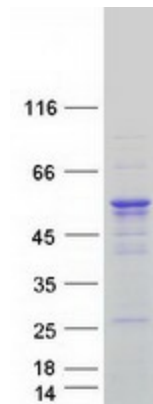
RefSeq ORF: 1458

Synonyms: CPE-BP1; CPEB; CPEB-1; h-CPEB; hCPEB-1

Summary: This gene encodes a member of the cytoplasmic polyadenylation element binding protein family. This highly conserved protein binds to a specific RNA sequence, called the cytoplasmic polyadenylation element, found in the 3' untranslated region of some mRNAs. The encoded protein functions in both the cytoplasm and the nucleus. It is involved in the regulation of mRNA translation, as well as processing of the 3' untranslated region, and may play a role in cell proliferation and tumorigenesis. Alternative splicing results in multiple transcript variants. [provided by RefSeq, Jan 2014]

Protein Pathways: Dorso-ventral axis formation, Oocyte meiosis, Progesterone-mediated oocyte maturation

Product images:



Coomassie blue staining of purified CPEB1 protein (Cat# [TP306406]). The protein was produced from HEK293T cells transfected with CPEB1 cDNA clone (Cat# [RC206406]) using MegaTran 2.0 (Cat# [TT210002]).