

## Product datasheet for TP306406L

### CPEB1 (NM\_001079535) Human Recombinant Protein

#### Product data:

<b>Product Type:</b>	Recombinant Proteins
<b>Description:</b>	Recombinant protein of human cytoplasmic polyadenylation element binding protein 1 (CPEB1), transcript variant 3, 1 mg
<b>Species:</b>	Human
<b>Expression Host:</b>	HEK293T
<b>Expression cDNA Clone or AA Sequence:</b>	>RC206406 protein sequence <b>Red</b> =Cloning site <b>Green</b> =Tags(s)

MLFPTSAQESSRGLPDANDLCLGLQSLSLTGWDRPWSTQSDSSAQSSTHSVLSMLHNPLGNVLGKPPLS  
FLPLDPLGSDLVDKFPAPSVRGSRLDTRPILDSRSSSPSDSDTSGFSSGSDHLSLISLRISPPPLPFLS  
LSGGGPRDPLKMGVGSRMDQEQAALAAVTPSPTSASKRWPGASVWPSWDLLEAPKDPFSIEREARLHRQA  
AAVNEATCTWSGQLPPRNYKNPIYSCKVFLGGVPWDITEAGLVNTRFRVFGSLVVEWPGKDGKHPRCPPKG  
YVYLVFELEKSVRSLLQACSHDPLSPDGLSEYFKMSSRRMRCKEVQVIPWVLADSNFVRSQRLDPSR  
TVFVGALHGMLNAEALAILNDLFGGVYAGIDTDKHKYPIGSGRVTFNNQRSYLKAVSAAFVEIKTTKF  
TKKVQIDPYLEDLSLCHICSSQPGPFRCRDQVCFKYFCRSCWHWRHSMEGLRHHSPLMRNQKNRDSS

**TRTRPLEQKLISEEDLAANDILDYKDDDDKV**

<b>Tag:</b>	C-Myc/DDK
<b>Predicted MW:</b>	53.5 kDa
<b>Concentration:</b>	>0.05 µg/µL as determined by microplate BCA method
<b>Purity:</b>	> 80% as determined by SDS-PAGE and Coomassie blue staining
<b>Buffer:</b>	25 mM Tris-HCl, 100 mM glycine, pH 7.3, 10% glycerol
<b>Preparation:</b>	Recombinant protein was captured through anti-DDK affinity column followed by conventional chromatography steps.
<b>Note:</b>	For testing in cell culture applications, please filter before use. Note that you may experience some loss of protein during the filtration process.
<b>Storage:</b>	Store at -80°C.
<b>Stability:</b>	Stable for 12 months from the date of receipt of the product under proper storage and handling conditions. Avoid repeated freeze-thaw cycles.



[View online »](#)

RefSeq: [NP\\_001073003](#)

Locus ID: 64506

UniProt ID: [Q9BZB8](#)

RefSeq Size: 3196

Cytogenetics: 15q25.2

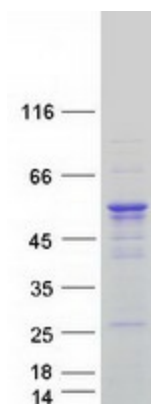
RefSeq ORF: 1458

Synonyms: CPE-BP1; CPEB; CPEB-1; h-CPEB; hCPEB-1

**Summary:** This gene encodes a member of the cytoplasmic polyadenylation element binding protein family. This highly conserved protein binds to a specific RNA sequence, called the cytoplasmic polyadenylation element, found in the 3' untranslated region of some mRNAs. The encoded protein functions in both the cytoplasm and the nucleus. It is involved in the regulation of mRNA translation, as well as processing of the 3' untranslated region, and may play a role in cell proliferation and tumorigenesis. Alternative splicing results in multiple transcript variants. [provided by RefSeq, Jan 2014]

**Protein Pathways:** Dorso-ventral axis formation, Oocyte meiosis, Progesterone-mediated oocyte maturation

### Product images:



Coomassie blue staining of purified CPEB1 protein (Cat# [TP306406]). The protein was produced from HEK293T cells transfected with CPEB1 cDNA clone (Cat# [RC206406]) using MegaTran 2.0 (Cat# [TT210002]).