

## Product datasheet for **TP306404L**

### **Bcl G (BCL2L14) (NM\_138722) Human Recombinant Protein**

#### **Product data:**

<b>Product Type:</b>	Recombinant Proteins
<b>Description:</b>	Recombinant protein of human BCL2-like 14 (apoptosis facilitator) (BCL2L14), transcript variant 1, 1 mg
<b>Species:</b>	Human
<b>Expression Host:</b>	HEK293T
<b>Expression cDNA Clone or AA Sequence:</b>	>RC206404 protein sequence <b>Red</b> =Cloning site <b>Green</b> =Tags(s)

MCSTSGCDLEEIPLDDDDLNTIEFKILAYYTRHHVFKSTPALFSPKLLRTRLSQRGLGNCANESWTEV  
SWPCRNSQSSEKAINLGKKSSWKAFFGWVEKEDSQSTPAKVSAQGQRTLEYQDSHSQQWSRCLSNVEQC  
LEHEAVDPKVISIANRVAEIVSWPPPQATQAGGFKSKEIFVTEGLSFQLQGHVPVASSSKDEEEQILA  
KIVELLKYSGDQLERKLLKDKALMGHFQDGLSYSVFKTITDQVLMGVDPRGESEVKAQGFKAAALVIDVTA  
KLT AIDNHPMNRVLGFGTKYLKENFSPWIQQHGGWEKILGISHEEVD

**TRTRPLEQKLISEEDLAANDILDYKDDDDKV**

<b>Tag:</b>	C-Myc/DDK
<b>Predicted MW:</b>	36.4 kDa
<b>Concentration:</b>	>0.05 µg/µL as determined by microplate BCA method
<b>Purity:</b>	> 80% as determined by SDS-PAGE and Coomassie blue staining
<b>Buffer:</b>	25 mM Tris-HCl, 100 mM glycine, pH 7.3, 10% glycerol
<b>Preparation:</b>	Recombinant protein was captured through anti-DDK affinity column followed by conventional chromatography steps.
<b>Note:</b>	For testing in cell culture applications, please filter before use. Note that you may experience some loss of protein during the filtration process.
<b>Storage:</b>	Store at -80°C.
<b>Stability:</b>	Stable for 12 months from the date of receipt of the product under proper storage and handling conditions. Avoid repeated freeze-thaw cycles.
<b>RefSeq:</b>	<a href="#">NP_620048</a>
<b>Locus ID:</b>	79370



[View online »](#)

UniProt ID: [Q9BZR8](#), [A0A024RAR1](#)

RefSeq Size: 1886

Cytogenetics: 12p13.2

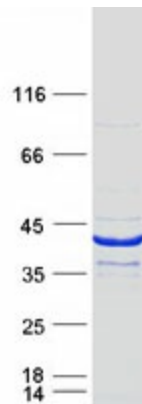
RefSeq ORF: 981

Synonyms: BCLG

**Summary:** The protein encoded by this gene belongs to the BCL2 protein family. BCL2 family members form hetero- or homodimers and act as anti- or pro-apoptotic regulators that are involved in a wide variety of cellular activities. Overexpression of this gene has been shown to induce apoptosis in cells. Three alternatively spliced transcript variants encoding two distinct isoforms have been reported for this gene. [provided by RefSeq, May 2009]

**Protein Families:** Druggable Genome

### Product images:



Coomassie blue staining of purified BCL2L14 protein (Cat# [TP306404]). The protein was produced from HEK293T cells transfected with BCL2L14 cDNA clone (Cat# [RC206404]) using MegaTran 2.0 (Cat# [TT210002]).