

## Product datasheet for TP306400L

### RILP (NM\_031430) Human Recombinant Protein

#### Product data:

Product Type:	Recombinant Proteins
Description:	Recombinant protein of human Rab interacting lysosomal protein (RILP), 1 mg
Species:	Human
Expression Host:	HEK293T
Expression cDNA Clone or AA Sequence:	>RC206400 representing NM_031430 <b>Red</b> =Cloning site <b>Green</b> =Tags(s)
	MEPRRAAPGVPGWGSREAAGSASAAELVYHLAGALGTELQDLARRFGPEAAAGLVPLVWRALELLEQAAV GPAPDSLQVSAQPAEQELRRLREENERLRREL RAGPQEERALLRQLKEVTDQRDELRAHNRDLRQRGQE TEALQEQLRLLLLVNAELRHKLAAMQTQLRAAQDRERERQPPGEAATPQAKERARGQAGRPGHQHGQPEPE WATAGAGAPGNPEDPAEAAQQLGRPSEAGQCRFSREEFEQILQERNELKAKVFLKKEELAYFQRELLTDH RVPGLLLEAMKVAVRKQRKKIKAKMLGTPEEAESSEDEAGPWILLSDDKGDHPPPPESKIQSFFGLWYRG KAESSEDETSSPAPSKLGGEEEAQPQSPAPDPPCSALHEHLCLGASAAPEA
	<b>TR</b> TRPLEQKLISEEDLAANDILDYKDDDDKV
Tag:	C-Myc/DDK
Predicted MW:	44 kDa
Concentration:	>0.05 µg/µL as determined by microplate BCA method
Purity:	> 80% as determined by SDS-PAGE and Coomassie blue staining
Buffer:	25 mM Tris-HCl, 100 mM glycine, pH 7.3, 10% glycerol
Preparation:	Recombinant protein was captured through anti-DDK affinity column followed by conventional chromatography steps.
Note:	For testing in cell culture applications, please filter before use. Note that you may experience some loss of protein during the filtration process.
Storage:	Store at -80°C.
Stability:	Stable for 12 months from the date of receipt of the product under proper storage and handling conditions. Avoid repeated freeze-thaw cycles.
RefSeq:	<a href="#">NP_113618</a>
Locus ID:	83547



[View online »](#)

UniProt ID: [Q96NA2](#)

RefSeq Size: 1811

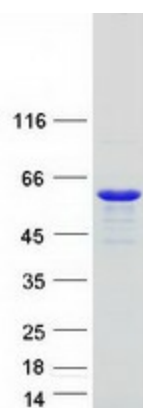
Cytogenetics: 17p13.3

RefSeq ORF: 1203

Synonyms: PP10141

**Summary:** This gene encodes a lysosomal protein that interacts with RAB7, a small GTPase that controls transport to endocytic degradative compartments. Studies using mutant forms of the two proteins suggest that this protein represents a downstream effector for RAB7, and both proteins act together in the regulation of late endocytic traffic. A unique region of this protein has also been shown to be involved in the regulation of lysosomal morphology. [provided by RefSeq, Sep 2011]

### Product images:



Coomassie blue staining of purified RILP protein (Cat# [TP306400]). The protein was produced from HEK293T cells transfected with RILP cDNA clone (Cat# [RC206400]) using MegaTran 2.0 (Cat# [TT210002]).