

## Product datasheet for **TP306390M**

### **FBXL2 (NM\_012157) Human Recombinant Protein**

#### **Product data:**

**Product Type:** Recombinant Proteins

**Description:** Purified recombinant protein of Homo sapiens F-box and leucine-rich repeat protein 2 (FBXL2), 100 µg

**Species:** Human

**Expression Host:** HEK293T

**Expression cDNA Clone or AA Sequence:** >RC206390 protein sequence  
**Red**=Cloning site **Green**=Tags(s)

MVFSNNDEGLINKKLPKELLRIFSFLLDIVTLRCRAQISKAWNILALDGSNWQRIDLFNFQTDVEGRVVE  
NISKRCGGFLRKLRLGCGIVGDSSLKTFAQNCRNIEHLNNGCTKITDSTCYSLSRFCSKLKHLDLTSC  
VSITNSSLKGISEGCRNLEYLNLSWCDQITKDGIEALVRGCRGLKALLRGCTQLEDEALKHIQNYCHEL  
VSLNLQSCSRITDEGVVQICRGCHRLQALCLSGCSNLTDASLTALGLNCPRLQILEAARCSHLTDAGFTL  
LARNCHELEKMDLEECILITDSTLIQLSIHCPKLQALSLSHCELITDDGILHLSNSTCGHERLRVLELDN  
CLLITDVALEHLENCRGLERLELYDCQVTRAGIKRMRAQLPHVKVHAYFAPVTPPTAVAGSGQRRCRC  
VIL

**TRTRPLEQKLISEEDLAANDILDYKDDDDKV**

**Tag:** C-Myc/DDK

**Predicted MW:** 46.9 kDa

**Concentration:** >0.05 µg/µL as determined by microplate BCA method

**Purity:** > 80% as determined by SDS-PAGE and Coomassie blue staining

**Buffer:** 25 mM Tris-HCl, 100 mM glycine, pH 7.3, 10% glycerol

**Preparation:** Recombinant protein was captured through anti-DDK affinity column followed by conventional chromatography steps.

**Note:** For testing in cell culture applications, please filter before use. Note that you may experience some loss of protein during the filtration process.

**Storage:** Store at -80°C.

**Stability:** Stable for 12 months from the date of receipt of the product under proper storage and handling conditions. Avoid repeated freeze-thaw cycles.



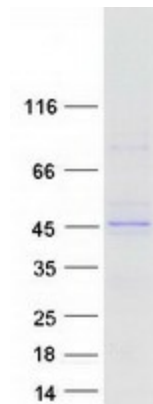
[View online »](#)

RefSeq:	<a href="#">NP_036289</a>
Locus ID:	25827
UniProt ID:	<a href="#">Q9UKC9</a>
RefSeq Size:	3000
Cytogenetics:	3p22.3
RefSeq ORF:	1269
Synonyms:	FBL2; FBL3

**Summary:** This gene encodes a member of the F-box protein family which is characterized by an approximately 40 amino acid motif, the F-box. The F-box proteins constitute one of the four subunits of ubiquitin protein ligase complex called SCFs (SKP1-cullin-F-box), which function in phosphorylation-dependent ubiquitination. The F-box proteins are divided into 3 classes: Fbws containing WD-40 domains, Fbls containing leucine-rich repeats, and Fbxs containing either different protein-protein interaction modules or no recognizable motifs. The protein encoded by this gene belongs to the Fbls class and, in addition to an F-box, contains 12 tandem leucine-rich repeats. Alternatively spliced transcript variants encoding different isoforms have been found for this gene. [provided by RefSeq, Jan 2010]

**Protein Families:** Druggable Genome

### Product images:



Coomassie blue staining of purified FBXL2 protein (Cat# [TP306390]). The protein was produced from HEK293T cells transfected with FBXL2 cDNA clone (Cat# [RC206390]) using MegaTran 2.0 (Cat# [TT210002]).