

Product datasheet for **TP306380L**

LRRC2 (NM_024750) Human Recombinant Protein

Product data:

Product Type:	Recombinant Proteins
Description:	Recombinant protein of human leucine rich repeat containing 2 (LRRC2), transcript variant 2, 1 mg
Species:	Human
Expression Host:	HEK293T
Expression cDNA Clone or AA Sequence:	>RC206380 protein sequence Red =Cloning site Green =Tags(s)

MGHKVWFDISVIRALWETRVKHKHAWQKKEVERLEKSALEKIKEEWNFVAECRRKGIPQAVYCKNGFID
TSVRLLDKIERNTLTRQSSLPKDRGKRSSAFVFEISGEHWTELPDSLKEQTHLREWYISNTLIQIIPTYI
QLFQAMRILDLPKNQISHLPAEIGCLKNLKELVGFNYLKSIPPELGDCENLERLDCSGNLELMELPFEL
SNLKQVTFVDISANKFSSVPICVLRMSNLQWLDISSNNLTDLPQDIDRLEELQSFLLYKNKLTLYLPYSML
NLKKLTLVSGDHLVELPTALCDSSTPLKFVSLMDNPIDNAQCEDGNEIMESERDRQHFDKEVMKAYIE
DLKERESVPSYTTKVSFSLQL

TRTRPLEQKLISEEDLAANDILDYKDDDDKV

Tag:	C-Myc/DDK
Predicted MW:	42.8 kDa
Concentration:	>0.05 µg/µL as determined by microplate BCA method
Purity:	> 80% as determined by SDS-PAGE and Coomassie blue staining
Buffer:	25 mM Tris-HCl, 100 mM glycine, pH 7.3, 10% glycerol
Preparation:	Recombinant protein was captured through anti-DDK affinity column followed by conventional chromatography steps.
Note:	For testing in cell culture applications, please filter before use. Note that you may experience some loss of protein during the filtration process.
Storage:	Store at -80°C.
Stability:	Stable for 12 months from the date of receipt of the product under proper storage and handling conditions. Avoid repeated freeze-thaw cycles.
RefSeq:	<u>NP_079026</u>



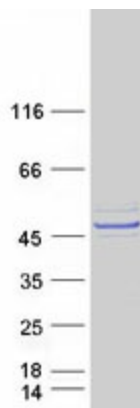
[View online »](#)

Locus ID:	79442
UniProt ID:	Q9BYS8
RefSeq Size:	4909
Cytogenetics:	3p21.31
RefSeq ORF:	1113
Synonyms:	leucine-rich repeat-containing 2; leucine rich repeat containing 2

Summary: This gene encodes a member of the leucine-rich repeat-containing family of proteins, which function in diverse biological pathways. This family member may possibly be a nuclear protein. Similarity to the RAS suppressor protein, as well as expression down-regulation observed in tumor cells, suggests that it may function as a tumor suppressor. The gene is located in the chromosome 3 common eliminated region 1 (C3CER1), a 1.4 Mb region that is commonly deleted in diverse tumors. A related pseudogene has been identified on chromosome 2. [provided by RefSeq, Sep 2011]

Protein Families: Druggable Genome

Product images:



Coomassie blue staining of purified LRRC2 protein (Cat# [TP306380]). The protein was produced from HEK293T cells transfected with LRRC2 cDNA clone (Cat# [RC206380]) using MegaTran 2.0 (Cat# [TT210002]).