

## Product datasheet for TP306373L

### SHC4 (NM\_203349) Human Recombinant Protein

#### Product data:

Product Type:	Recombinant Proteins
Description:	Recombinant protein of human SHC (Src homology 2 domain containing) family, member 4 (SHC4), 1 mg
Species:	Human
Expression Host:	HEK293T
Expression cDNA	>RC206373 protein sequence
Clone or AA Sequence:	Red=Cloning site Green=Tags(s)

MRERGDQSLAGLVLYVGLFGHPGMLHRAKYSRFRNESITSLDEGSSGGSVGDKGSPQPPHPALAPHLPTEDATLPSQESPTPLCTLIPRMA SMKLANPATLLSLKNFCLGTKEVPRLKLQESRDPGSSGPSSPETSLSRSGTAPPPQQDLVGH RATALTPDSCPLPGPGEPTLRSRQDRHFLQHLLGMGMNYCVRYMGCVLQSMRSLDFGMRTQVTREAI SRLCEAVPGANGA IKKRKPVEFLSTVLGKSNLQFSGMNIKLTISTCSLTLMNLDNQQIIANHHMQSISFASGGDPDTTDYVAYVAKDPVNQRACHILECHNGMAQDVISTIGQAFELRFKQYLKNPSLNTSCSEEEVHIDSHAEEREDHEYNEIPGKQPPVGGVSDMRIKVQATEQMAYCPIQCEKLCYLPGN SKCSSVYENCLEQSRAIGNVHPRGVQSQRGTSLLKHTCRVDFDDPCYINTQALQSTPGSAGNQRSAQPLGSPWHCGKAPETVQPGATAQPASSHSLPHIKQQLWSEECYHGKLSRKAESLLVKDGDFLVRESATSPGQYVLSGLQGGQAKHLLLVDPEGKVRTKDHVFDNVGHLIRYHMDNSLPIISSGSEVSLKQPVRKDNNPALLHSNK

TRTRPLEQKLI SEEDLAANDILDYKDDDDKV

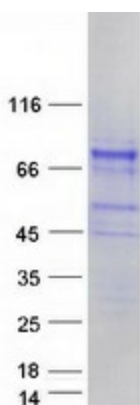
Tag:	C-Myc/DDK
Predicted MW:	68.6 kDa
Concentration:	>0.05 µg/µL as determined by microplate BCA method
Purity:	> 80% as determined by SDS-PAGE and Coomassie blue staining
Buffer:	25 mM Tris-HCl, 100 mM glycine, pH 7.3, 10% glycerol
Preparation:	Recombinant protein was captured through anti-DDK affinity column followed by conventional chromatography steps.
Note:	For testing in cell culture applications, please filter before use. Note that you may experience some loss of protein during the filtration process.
Storage:	Store at -80°C.



[View online »](#)

<b>Stability:</b>	Stable for 12 months from the date of receipt of the product under proper storage and handling conditions. Avoid repeated freeze-thaw cycles.
<b>RefSeq:</b>	<a href="#">NP_976224</a>
<b>Locus ID:</b>	399694
<b>UniProt ID:</b>	<a href="#">Q6S5L8</a>
<b>RefSeq Size:</b>	4556
<b>Cytogenetics:</b>	15q21.1
<b>RefSeq ORF:</b>	1890
<b>Synonyms:</b>	RaLP; SHCD
<b>Summary:</b>	Activates both Ras-dependent and Ras-independent migratory pathways in melanomas. Contributes to the early phases of agrin-induced tyrosine phosphorylation of CHRN1. [UniProtKB/Swiss-Prot Function]
<b>Protein Pathways:</b>	Chemokine signaling pathway, Chronic myeloid leukemia, ErbB signaling pathway, Focal adhesion, Glioma, Insulin signaling pathway, Natural killer cell mediated cytotoxicity, Neurotrophin signaling pathway

### Product images:



Coomassie blue staining of purified SHC4 protein (Cat# [TP306373]). The protein was produced from HEK293T cells transfected with SHC4 cDNA clone (Cat# [RC206373]) using MegaTran 2.0 (Cat# [TT210002]).