

Product datasheet for **TP306373**

SHC4 (NM_203349) Human Recombinant Protein

Product data:

| | |
|-----------------------|--|
| Product Type: | Recombinant Proteins |
| Description: | Recombinant protein of human SHC (Src homology 2 domain containing) family, member 4 (SHC4), 20 µg |
| Species: | Human |
| Expression Host: | HEK293T |
| Expression cDNA | >RC206373 protein sequence |
| Clone or AA Sequence: | Red=Cloning site Green=Tags(s) |

MRERGGQDSLAVLVVGLFGHPGMLHRAKYSRFRNESITSLDEGSSGGSVGDKGSPQPPHPALAPHLPTEDATLPSQESPTPLCTLIPRMAKLANPATLLSLKNFCLGTKEVPRLKLQESRDPGSSGPSSPETSLSRSGTAPPPQQDLVGHRTALTPDSCPLPGGPEPTLRSRQDRHFLQHLLGMGMNYCVRYMGCVEVLQSMRSLDFGMRTQVTREAIRLCEAVPGANGAIKKRKPVEFLSTVLGKSNLQFSGMNIKLTISTCSLTMNLDNQQIIANHHMQSISFASGGDPDTTDYVAVAKDPVNQRACHILECHNGMAQDVISTIGQAFELRFKQYLKNPSLNTSCSEEVHIDSHAEEREDHEYNEIPGKQPPVGGVSDMRIKVQATEQMAYCPIQCEKLCYLPGNPKSSVYENCLEQSRAIGNVHPRGVQSRGTSLLKHTCRVDFDDPCYINTQALQSTPGSAGNQRSAQPLGSPWHCGKAPETVQPGATAQPASSHSLPHIKQQLWSEECYHGKLSRKAESLLVKDGDFLVRESATSPGQYVLSGLQGGQAKHLLLVDPGKVRTKDHVFDNVGHLIRYHMDNSLPIISSGSEVSLKQPVRKDNNPALLHSNK

TRTRPLEQKLISEEDLAANDILDYKDDDDKV

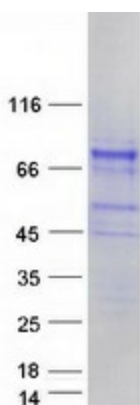
| | |
|----------------|--|
| Tag: | C-Myc/DDK |
| Predicted MW: | 68.6 kDa |
| Concentration: | >0.05 µg/µL as determined by microplate BCA method |
| Purity: | > 80% as determined by SDS-PAGE and Coomassie blue staining |
| Buffer: | 25 mM Tris-HCl, 100 mM glycine, pH 7.3, 10% glycerol |
| Preparation: | Recombinant protein was captured through anti-DDK affinity column followed by conventional chromatography steps. |
| Note: | For testing in cell culture applications, please filter before use. Note that you may experience some loss of protein during the filtration process. |
| Storage: | Store at -80°C. |



[View online »](#)

| | |
|--------------------------|---|
| Stability: | Stable for 12 months from the date of receipt of the product under proper storage and handling conditions. Avoid repeated freeze-thaw cycles. |
| RefSeq: | NP_976224 |
| Locus ID: | 399694 |
| UniProt ID: | Q6S5L8 |
| RefSeq Size: | 4556 |
| Cytogenetics: | 15q21.1 |
| RefSeq ORF: | 1890 |
| Synonyms: | RaLP; SHCD |
| Summary: | Activates both Ras-dependent and Ras-independent migratory pathways in melanomas. Contributes to the early phases of agrin-induced tyrosine phosphorylation of CHRNB1. [UniProtKB/Swiss-Prot Function] |
| Protein Pathways: | Chemokine signaling pathway, Chronic myeloid leukemia, ErbB signaling pathway, Focal adhesion, Glioma, Insulin signaling pathway, Natural killer cell mediated cytotoxicity, Neurotrophin signaling pathway |

Product images:



Coomassie blue staining of purified SHC4 protein (Cat# TP306373). The protein was produced from HEK293T cells transfected with SHC4 cDNA clone (Cat# [RC206373]) using MegaTran 2.0 (Cat# [TT210002]).