

## Product datasheet for **TP306367M**

### SMAP1 (NM\_001044305) Human Recombinant Protein

#### Product data:

**Product Type:** Recombinant Proteins

**Description:** Recombinant protein of human small ArfGAP 1 (SMAP1), transcript variant 1, 100 µg

**Species:** Human

**Expression** HEK293T

**Host:**

**Expression** >RC206367 protein sequence

**cDNA Clone or** **Red**=Cloning site **Green**=Tags(s)

**AA Sequence:**

MATRSCREKAQKLNEQHQLILSKLLREEDNKYCADCEAKGPRWASWNIGVFCIRCAGIHRNLGVHISRV  
KSVNLDQWTAEQIQCMQDMGNTKARLLYEANLPENFRRPQTDQAVEFFIRDKYEKKKYYDKNAIAITNIS  
SSDAPLQPLVSSPSLQAAVDKNKLEKEKEKKEKKEKREKEPEKPAKPLTAEKLQKKDQQLPEPKKSTSPKK  
AAEPTVDLLGLDGPVAVPTNGNTTVPPLNDDLDIFGPMISNPLPATVMPPAQGTPSAPAAATLSTVTSG  
DLDLFTEQTTKSEEVAKKQLSKDSILSLYGTGTIQQSTPGVFMGPTNIPFTSQAPAAFQGFPSMGVPVP  
AAPGLIGNVMGQSPSMMVGMPPNGFMGNAQTGVMLPQNVVGHQGGMVGQMGAPQSKFGLPQAQQPQWS  
LSQMNQMQAGMISSATPTAGFGQPSSTTAGWSGSSSGQTLSTQLWK

**TRTRPLEQKLISEEDLAANDILDYKDDDDKV**

**Tag:** C-Myc/DDK

**Predicted MW:** 50.2 kDa

**Concentration:** >0.05 µg/µL as determined by microplate BCA method

**Purity:** > 80% as determined by SDS-PAGE and Coomassie blue staining

**Buffer:** 25 mM Tris-HCl, 100 mM glycine, pH 7.3, 10% glycerol

**Preparation:** Recombinant protein was captured through anti-DDK affinity column followed by conventional chromatography steps.

**Note:** For testing in cell culture applications, please filter before use. Note that you may experience some loss of protein during the filtration process.

**Storage:** Store at -80°C.

**Stability:** Stable for 12 months from the date of receipt of the product under proper storage and handling conditions. Avoid repeated freeze-thaw cycles.



[View online »](#)

RefSeq: [NP\\_001037770](#)

Locus ID: 60682

UniProt ID: [Q8IYB5](#)

RefSeq Size: 3349

Cytogenetics: 6q13

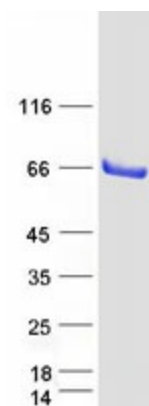
RefSeq ORF: 1401

Synonyms: SMAP-1

**Summary:** The protein encoded by this gene is similar to the mouse stromal membrane-associated protein-1. This similarity suggests that this human gene product is also a type II membrane glycoprotein involved in the erythropoietic stimulatory activity of stromal cells. Alternate splicing results in multiple transcript variants encoding different isoforms. [provided by RefSeq, Jul 2008]

Protein Pathways: Endocytosis

### Product images:



Coomassie blue staining of purified SMAP1 protein (Cat# [TP306367]). The protein was produced from HEK293T cells transfected with SMAP1 cDNA clone (Cat# [RC206367]) using MegaTran 2.0 (Cat# [TT210002]).