

Product datasheet for **TP306343M**

ALG1 (NM_019109) Human Recombinant Protein

Product data:

Product Type: Recombinant Proteins

Description: Recombinant protein of human asparagine-linked glycosylation 1, beta-1,4-mannosyltransferase homolog (*S. cerevisiae*) (ALG1), 100 µg

Species: Human

Expression Host: HEK293T

Expression cDNA Clone or AA Sequence: >RC206343 protein sequence
Red=Cloning site **Green**=Tags(s)

MAASCLVLLALCLLLPLLLLGGWKRWRRGRAARHVAVVLGDVGRSPRMQYHALSLAMHGFSVTLLGFCN
SKPHDELLQNNRIQIVGLTELQSLAVGPRVFQYGKVVLLQAMYLLWKLMMWREPGAYIFLQNPPLPSIAV
CWFVGCCLCGSKLVIDWHNYGYSIMGLVHGPNHPLVLLAKWYEKFFGRLSHLNLCVTNAMREDLADNWHIR
AVTVYDKPASFFKETPLDLQHRLFMKLGSMHSPFRARSEPEDPVTERSAFTERDAGSGLVTRLRERALL
VSSTSWTEDEDFSIILAALEKFEQLTLDGHNLPVLCVITGKGMREYYSRLIHKHFQHIQVCTPWLEA
EDYPLLLGSADLVCLHTSSSGLDLPKVVDMFGCCLPVCVAVNFKCLHELKHEENGLVFEDSEELAAQL
QMLFSNFPDPAGKLNQFRKNLRESQQLRWDESWVRTVLPVMDT

SGPTRTRPLEQKLISEEDLAANDILDYKDDDDKV

Tag: C-Myc/DDK

Predicted MW: 52.3 kDa

Concentration: >0.05 µg/µL as determined by microplate BCA method

Purity: > 80% as determined by SDS-PAGE and Coomassie blue staining

Buffer: 25 mM Tris-HCl, 100 mM glycine, pH 7.3, 10% glycerol

Preparation: Recombinant protein was captured through anti-DDK affinity column followed by conventional chromatography steps.

Note: For testing in cell culture applications, please filter before use. Note that you may experience some loss of protein during the filtration process.

Storage: Store at -80°C.

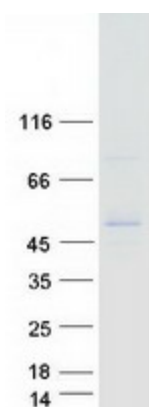
Stability: Stable for 12 months from the date of receipt of the product under proper storage and handling conditions. Avoid repeated freeze-thaw cycles.



[View online >](#)

RefSeq:	NP_061982
Locus ID:	56052
UniProt ID:	Q9BT22
RefSeq Size:	3946
Cytogenetics:	16p13.3
RefSeq ORF:	1392
Synonyms:	CDG1K; hMat-1; HMAT1; HMT-1; HMT1; Mat-1; MT-1
Summary:	The enzyme encoded by this gene catalyzes the first mannosylation step in the biosynthesis of lipid-linked oligosaccharides. This gene is mutated in congenital disorder of glycosylation type I _k . [provided by RefSeq, Dec 2008]
Protein Families:	Transmembrane
Protein Pathways:	Metabolic pathways, N-Glycan biosynthesis

Product images:



Coomassie blue staining of purified ALG1 protein (Cat# [TP306343]). The protein was produced from HEK293T cells transfected with ALG1 cDNA clone (Cat# [RC206343]) using MegaTran 2.0 (Cat# [TT210002]).