

## Product datasheet for **TP306343L**

### ALG1 (NM\_019109) Human Recombinant Protein

#### Product data:

**Product Type:** Recombinant Proteins

**Description:** Recombinant protein of human asparagine-linked glycosylation 1, beta-1,4-mannosyltransferase homolog (*S. cerevisiae*) (ALG1), 1 mg

**Species:** Human

**Expression Host:** HEK293T

**Expression cDNA Clone or AA Sequence:** >RC206343 protein sequence  
**Red**=Cloning site **Green**=Tags(s)

MAASCLVLLALCLLLPLLLLGGWKRWRRGRAARHVAVVLGDVGRSPRMQYHALSLAMHGFSVTLLGFCN  
SKPHDELLQNNRIQIVGLTELQSLAVGPRVFQYGKVVLLQAMYLLWKLMMWREPGAYIFLQNPPLPSIAV  
CWFVGCCLCGSKLVIDWHNYGYSIMGLVHGPNHPLVLLAKWYEKFFGRLSHLNLCVTNAMREDLADNWHIR  
AVTVYDKPASFFKETPLDLQHRLFMKLGSMSHSPFRARSEPEDPVTERSAFTERDAGSGLVTRLRERALL  
VSSTSWTEDEDFSIILAALEKFEQLTDGHNLPVLCVITGKGMREYYSRLIHKHFQHIQVCTPWLEA  
EDYPLLLGSADLVCLHTSSSGLDLPKVVDMFGCCLPVCVAVNFKCLHELKHEENGLVFEDSEELAAQL  
QMLFSNFPDPAGKLNQFRKNLRESQQLRWDESWVRTVPLVMDT

**SGPTRTRPLEQKLISEEDLAANDILDYKDDDDKV**

**Tag:** C-Myc/DDK

**Predicted MW:** 52.3 kDa

**Concentration:** >0.05 µg/µL as determined by microplate BCA method

**Purity:** > 80% as determined by SDS-PAGE and Coomassie blue staining

**Buffer:** 25 mM Tris-HCl, 100 mM glycine, pH 7.3, 10% glycerol

**Preparation:** Recombinant protein was captured through anti-DDK affinity column followed by conventional chromatography steps.

**Note:** For testing in cell culture applications, please filter before use. Note that you may experience some loss of protein during the filtration process.

**Storage:** Store at -80°C.

**Stability:** Stable for 12 months from the date of receipt of the product under proper storage and handling conditions. Avoid repeated freeze-thaw cycles.



[View online >](#)

RefSeq: [NP\\_061982](#)

Locus ID: 56052

UniProt ID: [Q9BT22](#)

RefSeq Size: 3946

Cytogenetics: 16p13.3

RefSeq ORF: 1392

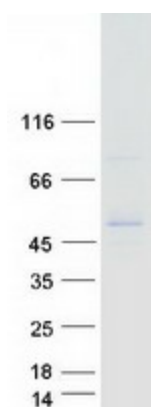
Synonyms: CDG1K; hMat-1; HMAT1; HMT-1; HMT1; Mat-1; MT-1

**Summary:** The enzyme encoded by this gene catalyzes the first mannosylation step in the biosynthesis of lipid-linked oligosaccharides. This gene is mutated in congenital disorder of glycosylation type I<sub>k</sub>. [provided by RefSeq, Dec 2008]

**Protein Families:** Transmembrane

**Protein Pathways:** Metabolic pathways, N-Glycan biosynthesis

### Product images:



Coomassie blue staining of purified ALG1 protein (Cat# [TP306343]). The protein was produced from HEK293T cells transfected with ALG1 cDNA clone (Cat# [RC206343]) using MegaTran 2.0 (Cat# [TT210002]).