

## Product datasheet for **TP306337M**

### **MOB4A (MOB1B) (NM\_173468) Human Recombinant Protein**

#### Product data:

Product Type:	Recombinant Proteins
Description:	Recombinant protein of human MOB1, Mps One Binder kinase activator-like 1A (yeast) (MOBKL1A), 100 µg
Species:	Human
Expression Host:	HEK293T
Expression cDNA Clone or AA Sequence:	>RC206337 protein sequence <b>Red</b> =Cloning site <b>Green</b> =Tags(s)
	 MSFLFGSRSSKTFKPKKNIPESHQYELLKHAETLGSGNLRMAVMLPEGEDLNEWVAVNTVDFFNQINM LYGTITDFCTEESCPVMSAGPKYEYHWADGTNIKKPIKCSAPKYIDYLMTWQDQLDDETLFPSKIGVFP PKNFMSVAKTILKRLFRVYAHYHQHFDPIVQLQEEAHLNTSFKHFIFFVQEFNLIDRRELAPLQELIEK LTSKDR  <b>TRTRPLEQKLISEEDLAANDILDYKDDDDKV</b>
Tag:	C-Myc/DDK
Predicted MW:	24.9 kDa
Concentration:	>0.05 µg/µL as determined by microplate BCA method
Purity:	> 80% as determined by SDS-PAGE and Coomassie blue staining
Buffer:	25 mM Tris-HCl, 100 mM glycine, pH 7.3, 10% glycerol
Preparation:	Recombinant protein was captured through anti-DDK affinity column followed by conventional chromatography steps.
Note:	For testing in cell culture applications, please filter before use. Note that you may experience some loss of protein during the filtration process.
Storage:	Store at -80°C.
Stability:	Stable for 12 months from the date of receipt of the product under proper storage and handling conditions. Avoid repeated freeze-thaw cycles.
RefSeq:	<u><a href="#">NP_775739</a></u>
Locus ID:	92597



[View online »](#)

UniProt ID: [Q7L9L4](#)

RefSeq Size: 6979

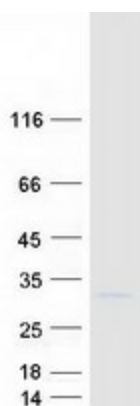
Cytogenetics: 4q13.3

RefSeq ORF: 648

Synonyms: MATS2; MOB4A; MOBKL1A

**Summary:** The protein encoded by this gene is similar to the yeast Mob1 protein. Yeast Mob1 binds Mps1p, a protein kinase essential for spindle pole body duplication and mitotic checkpoint regulation. Three transcript variants encoding different isoforms have been found for this gene. [provided by RefSeq, Sep 2011]

### Product images:



Coomassie blue staining of purified MOB1B protein (Cat# [TP306337]). The protein was produced from HEK293T cells transfected with MOB1B cDNA clone (Cat# [RC206337]) using MegaTran 2.0 (Cat# [TT210002]).