

Product datasheet for **TP306337**

MOB4A (MOB1B) (NM_173468) Human Recombinant Protein

Product data:

Product Type: Recombinant Proteins

Description: Recombinant protein of human MOB1, Mps One Binder kinase activator-like 1A (yeast) (MOBKL1A), 20 µg

Species: Human

Expression Host: HEK293T

Expression cDNA Clone or AA Sequence: >RC206337 protein sequence
Red=Cloning site **Green**=Tags(s)

MSFLFGSRSSKTFKPKKNIPESHQYELLKHAETLGSGNLRMAVMLPEGEDLNEWVAVNTVDFFNQINM
LYGTITDFCTEESCPVMSAGPKYEYHWADGTNIKKPIKCSAPKYIDYLMTWQDQLDDETLFPSKIGVVPF
PKNFMSVAKTILKRLFRVYAHYHQHFDPIVQLQEEAHLNTSFKHFIFFVQEFNLIDRRELAPLQELIEK
LTSKDR

TRTRPLEQKLISEEDLAANDILDYKDDDDKV

Tag: C-Myc/DDK

Predicted MW: 24.9 kDa

Concentration: >0.05 µg/µL as determined by microplate BCA method

Purity: > 80% as determined by SDS-PAGE and Coomassie blue staining

Buffer: 25 mM Tris-HCl, 100 mM glycine, pH 7.3, 10% glycerol

Preparation: Recombinant protein was captured through anti-DDK affinity column followed by conventional chromatography steps.

Note: For testing in cell culture applications, please filter before use. Note that you may experience some loss of protein during the filtration process.

Storage: Store at -80°C.

Stability: Stable for 12 months from the date of receipt of the product under proper storage and handling conditions. Avoid repeated freeze-thaw cycles.

RefSeq: [NP_775739](#)

Locus ID: 92597



[View online »](#)

UniProt ID: [Q7L9L4](#)

RefSeq Size: 6979

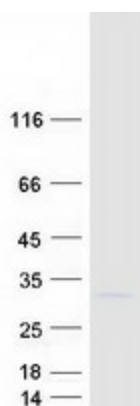
Cytogenetics: 4q13.3

RefSeq ORF: 648

Synonyms: MATS2; MOB4A; MOBKL1A

Summary: The protein encoded by this gene is similar to the yeast Mob1 protein. Yeast Mob1 binds Mps1p, a protein kinase essential for spindle pole body duplication and mitotic checkpoint regulation. Three transcript variants encoding different isoforms have been found for this gene. [provided by RefSeq, Sep 2011]

Product images:



Coomassie blue staining of purified MOB1B protein (Cat# TP306337). The protein was produced from HEK293T cells transfected with MOB1B cDNA clone (Cat# [RC206337]) using MegaTran 2.0 (Cat# [TT210002]).