

Product datasheet for **TP306333M**

GTL3B (NATD1) (NM_152914) Human Recombinant Protein

Product data:

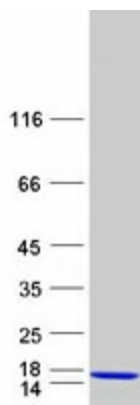
Product Type:	Recombinant Proteins
Description:	Recombinant protein of human chromosome 17 open reading frame 103 (C17orf103), 100 µg
Species:	Human
Expression Host:	HEK293T
Expression cDNA Clone or AA Sequence:	>RC206333 protein sequence Red =Cloning site Green =Tags(s) MAHSAAVPLGALEQGCPIRVEHRRRRQFTVRLNGCHDRAVLLYEYVGKRIVDLQHTEVPDAYSGRGIA KHLAKAALDFVVEEDLKAHLTCWYIQKYVKENPLPQYLERLQP TR TRPLE QKLISEEDLA NDILDYKDDDDKV
Tag:	C-Myc/DDK
Predicted MW:	12.9 kDa
Concentration:	>0.05 µg/µL as determined by microplate BCA method
Purity:	> 80% as determined by SDS-PAGE and Coomassie blue staining
Buffer:	25 mM Tris-HCl, 100 mM glycine, pH 7.3, 10% glycerol
Preparation:	Recombinant protein was captured through anti-DDK affinity column followed by conventional chromatography steps.
Note:	For testing in cell culture applications, please filter before use. Note that you may experience some loss of protein during the filtration process.
Storage:	Store at -80°C.
Stability:	Stable for 12 months from the date of receipt of the product under proper storage and handling conditions. Avoid repeated freeze-thaw cycles.
RefSeq:	NP_690878
Locus ID:	256302
UniProt ID:	Q8N6N6
RefSeq Size:	4787
Cytogenetics:	17p11.2


[View online »](#)

RefSeq ORF: 339

Synonyms: C17orf103; Gtlf3b

Product images:



Coomassie blue staining of purified NATD1 protein (Cat# [TP306333]). The protein was produced from HEK293T cells transfected with NATD1 cDNA clone (Cat# [RC206333]) using MegaTran 2.0 (Cat# [TT210002]).