

Product datasheet for **TP306333L**

GTL3B (NATD1) (NM_152914) Human Recombinant Protein

Product data:

| | |
|--|--|
| Product Type: | Recombinant Proteins |
| Description: | Recombinant protein of human chromosome 17 open reading frame 103 (C17orf103), 1 mg |
| Species: | Human |
| Expression Host: | HEK293T |
| Expression cDNA Clone or AA Sequence: | >RC206333 protein sequence Red =Cloning site Green =Tags(s) MAHSAAVPLGALEQGCPIRVEHDRRRRQFTVRLNGCHDRAVLLYEYVGKRIVDLQHTEVPDAYSGRGIA KHLAKAALDFVVEEDLKAHLTCWYIQKYVKENPLPQYLERLQP TRTRPLEQKLISEEDLAANDILDYKDDDDKV |
| Tag: | C-Myc/DDK |
| Predicted MW: | 12.9 kDa |
| Concentration: | >0.05 µg/µL as determined by microplate BCA method |
| Purity: | > 80% as determined by SDS-PAGE and Coomassie blue staining |
| Buffer: | 25 mM Tris-HCl, 100 mM glycine, pH 7.3, 10% glycerol |
| Preparation: | Recombinant protein was captured through anti-DDK affinity column followed by conventional chromatography steps. |
| Note: | For testing in cell culture applications, please filter before use. Note that you may experience some loss of protein during the filtration process. |
| Storage: | Store at -80°C. |
| Stability: | Stable for 12 months from the date of receipt of the product under proper storage and handling conditions. Avoid repeated freeze-thaw cycles. |
| RefSeq: | NP_690878 |
| Locus ID: | 256302 |
| UniProt ID: | Q8N6N6 |
| RefSeq Size: | 4787 |
| Cytogenetics: | 17p11.2 |

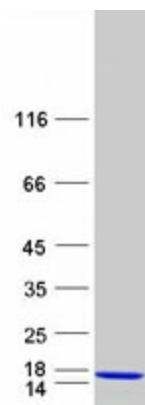


[View online »](#)

RefSeq ORF: 339

Synonyms: C17orf103; Gtlf3b

Product images:



Coomassie blue staining of purified NATD1 protein (Cat# [TP306333]). The protein was produced from HEK293T cells transfected with NATD1 cDNA clone (Cat# [RC206333]) using MegaTran 2.0 (Cat# [TT210002]).