

Product datasheet for **TP306319M**

LIX1 (NM_153234) Human Recombinant Protein

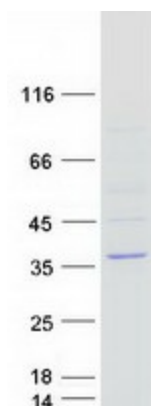
Product data:

Product Type:	Recombinant Proteins
Description:	Recombinant protein of human Lix1 homolog (chicken) (LIX1), 100 µg
Species:	Human
Expression Host:	HEK293T
Expression cDNA Clone or AA Sequence:	>RC206319 protein sequence Red =Cloning site Green =Tags(s)
	 MDITLESLRHIIAQVLPHRDPALVFKDLNVVSMQLQEFWESKQQQKAAPSEGVVYVYSLPAPGPPFVSYV TLPGGSCFGNFQCCLSRAEARRDAAKVALINSLFNELPSRRITKEFIMESVQEAFASTSGTLDDADDPST SVGAYHYMLESNMGKTMLEFQELMTIFQLLHWNGSLKALRETKCSRQEVISYYSQYSLDEKMRSHMALDW IMKERDSPGIVSQELRMALRQLEEARKAGQELRFYKEKKEILSLALTQICSDPDTSSPSDDQLSLTALCG YH TRTRPLEQKLISEEDLAANDILDYKDDDDKV
Tag:	C-Myc/DDK
Predicted MW:	31.7 kDa
Concentration:	>0.05 µg/µL as determined by microplate BCA method
Purity:	> 80% as determined by SDS-PAGE and Coomassie blue staining
Buffer:	25 mM Tris-HCl, 100 mM glycine, pH 7.3, 10% glycerol
Preparation:	Recombinant protein was captured through anti-DDK affinity column followed by conventional chromatography steps.
Note:	For testing in cell culture applications, please filter before use. Note that you may experience some loss of protein during the filtration process.
Storage:	Store at -80°C.
Stability:	Stable for 12 months from the date of receipt of the product under proper storage and handling conditions. Avoid repeated freeze-thaw cycles.
RefSeq:	NP_694966
Locus ID:	167410



[View online »](#)

UniProt ID: [Q8N485](#)
RefSeq Size: 3979
Cytogenetics: 5q15
RefSeq ORF: 846
Synonyms: C5orf11; Lft

Product images:

Coomassie blue staining of purified LIX1 protein (Cat# [TP306319]). The protein was produced from HEK293T cells transfected with LIX1 cDNA clone (Cat# [RC206319]) using MegaTran 2.0 (Cat# [TT210002]).