

## Product datasheet for **TP306319**

### LIX1 (NM\_153234) Human Recombinant Protein

#### Product data:

**Product Type:** Recombinant Proteins

**Description:** Recombinant protein of human Lix1 homolog (chicken) (LIX1), 20 µg

**Species:** Human

**Expression Host:** HEK293T

**Expression cDNA Clone  
or AA Sequence:** >RC206319 protein sequence  
**Red**=Cloning site **Green**=Tags(s)

MDITLESLRHIIAQVLPHRDPALVFKDLNVVSMQLQEFWESKQQQKAAPSEGVVYVYSLPAPGPPFVSYV  
TLPGGSCFGNFCCLSRAEARRDAAKVALINSLFNELPSRRITKEFIMESVQEAFASTSGTLDDADDPST  
SVGAYHYMLESNMGKTMLEFQELMTIFQLLHWNGSLKALRETKCSRQEVISYYSQYSLDEKMRSHMALDW  
IMKERDSPGIVSQELRMALRQLEEARKAGQELRFYKEKKEILSLALTQICSDPDTSSPSDDQLSLTALCG  
YH

**TRTRPLEQKLISEEDLAANDILDYKDDDDKV**

**Tag:** C-Myc/DDK

**Predicted MW:** 31.7 kDa

**Concentration:** >0.05 µg/µL as determined by microplate BCA method

**Purity:** > 80% as determined by SDS-PAGE and Coomassie blue staining

**Buffer:** 25 mM Tris-HCl, 100 mM glycine, pH 7.3, 10% glycerol

**Preparation:** Recombinant protein was captured through anti-DDK affinity column followed by conventional chromatography steps.

**Note:** For testing in cell culture applications, please filter before use. Note that you may experience some loss of protein during the filtration process.

**Storage:** Store at -80°C.

**Stability:** Stable for 12 months from the date of receipt of the product under proper storage and handling conditions. Avoid repeated freeze-thaw cycles.

**RefSeq:** [NP\\_694966](#)

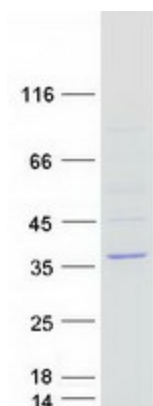
**Locus ID:** 167410



[View online »](#)

UniProt ID: [Q8N485](#)  
RefSeq Size: 3979  
Cytogenetics: 5q15  
RefSeq ORF: 846  
Synonyms: C5orf11; Lft

### Product images:



Coomassie blue staining of purified LIX1 protein (Cat# TP306319). The protein was produced from HEK293T cells transfected with LIX1 cDNA clone (Cat# [RC206319]) using MegaTran 2.0 (Cat# [TT210002]).