

Product datasheet for **TP306314M**

SULT4A1 (NM_014351) Human Recombinant Protein

Product data:

| | |
|-----------------------|---|
| Product Type: | Recombinant Proteins |
| Description: | Recombinant protein of human sulfotransferase family 4A, member 1 (SULT4A1), 100 µg |
| Species: | Human |
| Expression Host: | HEK293T |
| Expression cDNA | >RC206314 protein sequence |
| Clone or AA Sequence: | Red=Cloning site Green=Tags(s) |

MAESEAETPSTPGEFESKYFEFHGVRLPPFCRGKMEEIANFPVRPSDVWIVTYPGTSLLQEYVYLVVSQG
ADPDEIGLMNIDEQLPVLEYPQPGLDIKELTSPRLIKSHLPYRFLPSDLHNGDSKVIYMARNPKDLVVS
YYQFHRSRLTMSYRGTFQEFCCRFMNDKLGYSWFEHVQEFWEHRMDSNVLFKLYEDMHRDLVTMVEQLA
RFLGVSCDKAQLALTEHCHQLVDQCCNAEALPVGRGRVGLWKDIFTVSMNEKFDLVYKQKMGKCDLTFD
FYL

TRTRPLEQKLISEEDLAANDILDYKDDDDKV

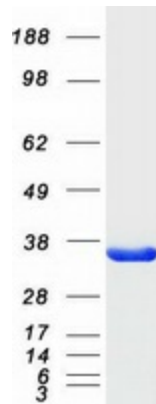
| | |
|----------------|--|
| Tag: | C-Myc/DDK |
| Predicted MW: | 32.9 kDa |
| Concentration: | >0.05 µg/µL as determined by microplate BCA method |
| Purity: | > 80% as determined by SDS-PAGE and Coomassie blue staining |
| Buffer: | 25 mM Tris-HCl, 100 mM glycine, pH 7.3, 10% glycerol |
| Preparation: | Recombinant protein was captured through anti-DDK affinity column followed by conventional chromatography steps. |
| Note: | For testing in cell culture applications, please filter before use. Note that you may experience some loss of protein during the filtration process. |
| Storage: | Store at -80°C. |
| Stability: | Stable for 12 months from the date of receipt of the product under proper storage and handling conditions. Avoid repeated freeze-thaw cycles. |
| RefSeq: | NP_055166 |
| Locus ID: | 25830 |



[View online »](#)

| | |
|---------------|---|
| UniProt ID: | <u>Q9BR01</u> |
| RefSeq Size: | 2465 |
| Cytogenetics: | 22q13.31 |
| RefSeq ORF: | 849 |
| Synonyms: | BR-STL-1; BRSTL1; DJ388M5.3; hBR-STL-1; NST; SULTX3 |
| Summary: | This gene encodes a member of the sulfotransferase family. The encoded protein is a brain-specific sulfotransferase believed to be involved in the metabolism of neurotransmitters. Polymorphisms in this gene may be associated with susceptibility to schizophrenia. [provided by RefSeq, Jul 2008] |

Product images:



Coomassie blue staining of purified SULT4A1 protein (Cat# [TP306314]). The protein was produced from HEK293T cells transfected with SULT4A1 cDNA clone (Cat# [RC206314]) using MegaTran 2.0 (Cat# [TT210002]).