

Product datasheet for **TP306308M**

CLDND2 (NM_152353) Human Recombinant Protein

Product data:

Product Type:	Recombinant Proteins
Description:	Recombinant protein of human claudin domain containing 2 (CLDND2), 100 µg
Species:	Human
Expression Host:	HEK293T
Expression cDNA Clone or AA Sequence:	>RC206308 protein sequence Red =Cloning site Green =Tags(s)
	<p>MGVKRSLQSGGILLSLVANVLMVLSTATNYWTRQQEGHSGLWQECNHGICSSIPCQTTLAVTVACMVLA V GVGVVGMVMGLRIRCDEGESLRGQTTS AFLFLGGLLLLTALIGYTVKNAWKNNVFFSWSYFSGWLALPFS ILAGFCFLADMIMQSTDAISGFPVCL</p> <p>TRTRPLEQKLISEEDLAANDILDYKDDDDKV</p>
Tag:	C-Myc/DDK
Predicted MW:	17.8 kDa
Concentration:	>0.05 µg/µL as determined by microplate BCA method
Purity:	> 80% as determined by SDS-PAGE and Coomassie blue staining
Buffer:	25 mM Tris-HCl, 100 mM glycine, pH 7.3, 10% glycerol
Preparation:	Recombinant protein was captured through anti-DDK affinity column followed by conventional chromatography steps.
Note:	For testing in cell culture applications, please filter before use. Note that you may experience some loss of protein during the filtration process.
Storage:	Store at -80°C.
Stability:	Stable for 12 months from the date of receipt of the product under proper storage and handling conditions. Avoid repeated freeze-thaw cycles.
RefSeq:	<u>NP_689566</u>
Locus ID:	125875
UniProt ID:	<u>Q8NHS1</u>



[View online »](#)

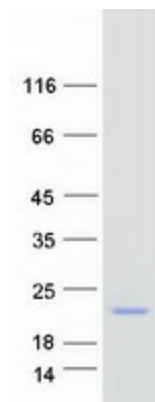
RefSeq Size: 990

Cytogenetics: 19q13.41

RefSeq ORF: 501

Protein Families: Transmembrane

Product images:



Coomassie blue staining of purified CLDND2 protein (Cat# [TP306308]). The protein was produced from HEK293T cells transfected with CLDND2 cDNA clone (Cat# [RC206308]) using MegaTran 2.0 (Cat# [TT210002]).