

## Product datasheet for TP306292M

### Perilipin-1 (PLIN1) (NM\_002666) Human Recombinant Protein

#### Product data:

**Product Type:** Recombinant Proteins  
**Description:** Recombinant protein of human perilipin (PLIN), transcript variant 1, 100 µg  
**Species:** Human  
**Expression Host:** HEK293T  
**Expression cDNA Clone or AA Sequence:** >RC206292 representing NM\_002666  
Red=Cloning site Green=Tags(s)

MAVNKGLTLLDGDLPQENVLQQRVLQLPVWVSGTCECFQKTYTSTKEAHPLVASVCNAYEKGVSASSLAA  
 WSMEPVVRRLLSTQFTAANELACRGLDHLEEKIPALQYPPEKIASSELKDTISTRRLRSARNISVPIASTSD  
 KVLGAALAGCELAWGVARDTAEFAANTRAGRLASGGADLALGSIKVEYLLPADKEESAPAPGHQQAQE  
 SPKAKPSLLSRVGALTNTLSRYTVQTMARALEQGHTVAMWIPGVVPLSSLAQWGASVAMQAVSRRRSEVR  
 VPWLHSLAAAQEEDHEDQTDTEGEDTEEEEELETEENKFSEVAALPGPRGLLGGVAHTLQKTLQTTISAV  
 TWAPAAVLGMAGRVLHLPAPAVSSTKGRAMSLSDALKGVTDNVVDTVWHYVPLPRLSLMEPESEFRDID  
 NPPAEVERREAERRASGAPSAGPEPAPRLAQRRLSLSAQSPGAPPGPGLLEDEVATPAAPRPGFPAVPRE  
 KPKRRVSDSFFRPSVMEPIGRTHYSQLRKKK

TRTRPLEQKLISEEDLAANDILDYKDDDDKV

**Tag:** C-Myc/DDK  
**Predicted MW:** 55.8 kDa  
**Concentration:** >0.05 µg/µL as determined by microplate BCA method  
**Purity:** > 80% as determined by SDS-PAGE and Coomassie blue staining  
**Buffer:** 25 mM Tris-HCl, 100 mM glycine, pH 7.3, 10% glycerol  
**Preparation:** Recombinant protein was captured through anti-DDK affinity column followed by conventional chromatography steps.  
**Note:** For testing in cell culture applications, please filter before use. Note that you may experience some loss of protein during the filtration process.  
**Storage:** Store at -80°C.  
**Stability:** Stable for 12 months from the date of receipt of the product under proper storage and handling conditions. Avoid repeated freeze-thaw cycles.



[View online >](#)

RefSeq: [NP\\_002657](#)

Locus ID: 5346

UniProt ID: [O60240](#)

RefSeq Size: 2922

Cytogenetics: 15q26.1

RefSeq ORF: 1566

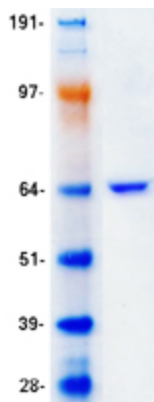
Synonyms: FPLD4; PERI; PLIN

**Summary:** The protein encoded by this gene coats lipid storage droplets in adipocytes, thereby protecting them until they can be broken down by hormone-sensitive lipase. The encoded protein is the major cAMP-dependent protein kinase substrate in adipocytes and, when unphosphorylated, may play a role in the inhibition of lipolysis. Alternatively spliced transcript variants varying in the 5' UTR, but encoding the same protein, have been found for this gene. [provided by RefSeq, Feb 2009]

**Protein Families:** Druggable Genome

**Protein Pathways:** PPAR signaling pathway

### Product images:



Coomassie blue staining of purified PLIN1 protein (Cat# [TP306292]). The protein was produced from HEK293T cells transfected with PLIN1 cDNA clone (Cat# [RC206292]) using MegaTran 2.0 (Cat# [TT210002]).