

## Product datasheet for **TP306285**

### Centrin 1 (CETN1) (NM\_004066) Human Recombinant Protein

#### Product data:

Product Type:	Recombinant Proteins
Description:	Recombinant protein of human centrin, EF-hand protein, 1 (CETN1), 20 µg
Species:	Human
Expression Host:	HEK293T
Expression cDNA Clone or AA Sequence:	>RC206285 protein sequence <b>Red</b> =Cloning site <b>Green</b> =Tags(s)
	MASGFKKPSAASTGQKRKVAPKPELTEDQKQEVREAFDLFDVDGSGTIDAKELKVAMRALGFEPKKEEMK KMISEVDREGTGKISFNDFLAVMTQKMSEKDTKEEILKAFRLFDDDETGKISFKNLKRVANELGENLTDE ELQEMIDEADRDGDGEVNEEEFLRIMKKTSLY
	<b>TR</b> TRPLEQKLISEEDLAANDILDYKDDDDKV
Tag:	C-Myc/DDK
Predicted MW:	19.4 kDa
Concentration:	>0.05 µg/µL as determined by microplate BCA method
Purity:	> 80% as determined by SDS-PAGE and Coomassie blue staining
Buffer:	25 mM Tris-HCl, 100 mM glycine, pH 7.3, 10% glycerol
Preparation:	Recombinant protein was captured through anti-DDK affinity column followed by conventional chromatography steps.
Note:	For testing in cell culture applications, please filter before use. Note that you may experience some loss of protein during the filtration process.
Storage:	Store at -80°C.
Stability:	Stable for 12 months from the date of receipt of the product under proper storage and handling conditions. Avoid repeated freeze-thaw cycles.
RefSeq:	<u><a href="#">NP_004057</a></u>
Locus ID:	1068
UniProt ID:	<u><a href="#">Q12798</a></u> , <u><a href="#">A0A140VJG3</a></u>
RefSeq Size:	1161



[View online »](#)

Cytogenetics: 18p11.32

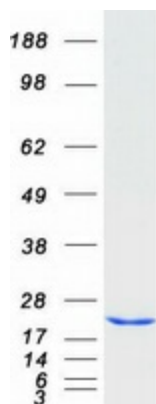
RefSeq ORF: 516

Synonyms: CEN1; CETN

**Summary:** The protein encoded by this gene plays important roles in the determination of centrosome position and segregation, and in the process of microtubule severing. This protein is localized to the centrosome of interphase cells, and redistributes to the region of the spindle poles during mitosis, reflecting the dynamic behavior of the centrosome during the cell cycle. [provided by RefSeq, Jan 2015]

**Protein Families:** Druggable Genome

### Product images:



Coomassie blue staining of purified CETN1 protein (Cat# TP306285). The protein was produced from HEK293T cells transfected with CETN1 cDNA clone (Cat# [RC206285]) using MegaTran 2.0 (Cat# [TT210002]).