

## Product datasheet for **TP306279M**

### STAM2 (NM\_005843) Human Recombinant Protein

#### Product data:

Product Type:	Recombinant Proteins
Description:	Recombinant protein of human signal transducing adaptor molecule (SH3 domain and ITAM motif) 2 (STAM2), 100 µg
Species:	Human
Expression Host:	HEK293T
Expression cDNA	>RC206279 protein sequence
Clone or AA Sequence:	Red=Cloning site Green=Tags(s)

MPLFTANPFEQDVEKATNEYNTTEDWSLIMDICDKVGSTPNGAKDCLKAIMKRVNHKVPHVALQALLLG  
ACVANCCKIFHLEVCSRDFATEVRAVIKNAHPKVCEKLSLMVEWSEEFQKDPQFSLISATIKSMKEEG  
ITFPPAGSQTVSAAAKNGTSSNKNKEDEDIKAIELSLQEQQHTTETKSLYPSSEIQLNNKVARVLRAL  
YDFEAVEDNELTFKHGEIIVLDDSDANWWKGENHRGIGLFPNFTTNIETEA AAVDKLNVIDDDVE  
EIKKSEPEPVYIDEDKMDRALQVLQSIDPTDSKPDSQDLLDLEDICQQMGPMIDEKLEEIDRKHSELSEL  
NVKLVLEALELYNKLVNEAPVYSVYSLHPPAHYPPASSGVPMQTYPVQSHGGNYMGQSIHQVTVAQSYSL  
GPDQIGPLRSLPPNVNSSVTAQPAQTSYLSTGQDTVSNPTYMNQNSNLQSATGTTAYTQQMGMSVDMSSY  
QNTTNSLPLQLAGFPVTPAHPVAQQHTNYHQPLL

TRTRPLEQKLISEEDLAANDILDYKDDDDKV

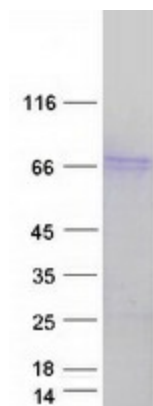
Tag:	C-Myc/DDK
Predicted MW:	58 kDa
Concentration:	>0.05 µg/µL as determined by microplate BCA method
Purity:	> 80% as determined by SDS-PAGE and Coomassie blue staining
Buffer:	25 mM Tris-HCl, 100 mM glycine, pH 7.3, 10% glycerol
Preparation:	Recombinant protein was captured through anti-DDK affinity column followed by conventional chromatography steps.
Note:	For testing in cell culture applications, please filter before use. Note that you may experience some loss of protein during the filtration process.
Storage:	Store at -80°C.



[View online »](#)

<b>Stability:</b>	Stable for 12 months from the date of receipt of the product under proper storage and handling conditions. Avoid repeated freeze-thaw cycles.
<b>RefSeq:</b>	<a href="#">NP_005834</a>
<b>Locus ID:</b>	10254
<b>UniProt ID:</b>	<a href="#">O75886</a>
<b>RefSeq Size:</b>	5701
<b>Cytogenetics:</b>	2q23.3
<b>RefSeq ORF:</b>	1575
<b>Synonyms:</b>	Hbp; STAM2A; STAM2B
<b>Summary:</b>	The protein encoded by this gene is closely related to STAM, an adaptor protein involved in the downstream signaling of cytokine receptors, both of which contain a SH3 domain and the immunoreceptor tyrosine-based activation motif (ITAM). Similar to STAM, this protein acts downstream of JAK kinases, and is phosphorylated in response to cytokine stimulation. This protein and STAM thus are thought to exhibit compensatory effects on the signaling pathway downstream of JAK kinases upon cytokine stimulation. [provided by RefSeq, Jul 2008]
<b>Protein Pathways:</b>	Endocytosis, Jak-STAT signaling pathway

### Product images:



Coomassie blue staining of purified STAM2 protein (Cat# [TP306279]). The protein was produced from HEK293T cells transfected with STAM2 cDNA clone (Cat# [RC206279]) using MegaTran 2.0 (Cat# [TT210002]).