

Product datasheet for **TP306265M**

Glutaminase (GLS) (NM_014905) Human Recombinant Protein

Product data:

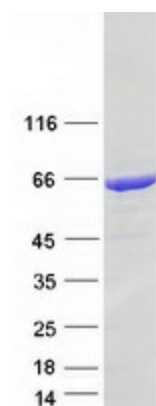
Product Type:	Recombinant Proteins
Description:	Recombinant protein of human glutaminase (GLS), nuclear gene encoding mitochondrial protein, 100 µg
Species:	Human
Expression Host:	HEK293T
Expression cDNA Clone or AA Sequence:	>RC206265 representing NM_014905 Red =Cloning site Green =Tags(s)
	<p>MMRLRGSGMLRDLLLLRSPAGVSATLRRRAQPLVTLRPRGGGRPAAGPAAAARLHPWWGGGGWPAEPLAR GLSSSPSEILQELGKGSTHPQPGVSPPAAPAAPGPKDGPGETDAFGNSEGKELVASGENKIKQGLLPSLE DLLFYTIAEGQEKIPVHKFITALKSTGLRTSDPRLKECMDMLRLLTQTTSDGVMLDKDLFKKCVQSNIVL LTQAFRRKFVIPDFMSFTSHIDELYESAQQSGGKVADYIPQLAKFSPDLWGVSVCTVDGQRHSTGDTKV PFCLQSCVKPLKYAIAVNDLGTEYVHRYVVGKEPSGLRFNKLFLNEDDKPHNPMVNAGAIWVTSLIKQGVN NAEKFDYVMQFLNKMAGNEYVGFSNATFQSERESGDRNFAIGYYLKEKKCFPEGTDMMVILDFYFQLCSI EVTCEASVMAATLANGGFCPITGERVLSPEAVRNTLSLMHSCGMYDFSGQFAFHVGLPAKSGVAGGILL WPNVMGMMCWSPPLDKMGNSVKGIFCHDLVSLCNFNHNYDNLRFHAKKLDPRREGGDQRVKSVINLLFA AYTGDVSALRRFALSAMDMEQRDYDSRTALHVAEEGHVEVVKFLEACKVNPFPKDRWNNTPMDEALHF GHHDVFKILQEYQVQYTPQGSDNGKENQTVHKNLDGLL</p> <p>SGPTRRRLEQKLISEEDLAANDILDYKDDDDKV</p>
Tag:	C-Myc/DDK
Predicted MW:	73.3 kDa
Concentration:	>0.05 µg/µL as determined by microplate BCA method
Purity:	> 80% as determined by SDS-PAGE and Coomassie blue staining
Buffer:	25 mM Tris-HCl, 100 mM glycine, pH 7.3, 10% glycerol
Preparation:	Recombinant protein was captured through anti-DDK affinity column followed by conventional chromatography steps.
Note:	For testing in cell culture applications, please filter before use. Note that you may experience some loss of protein during the filtration process.
Storage:	Store at -80°C.



[View online »](#)

Stability:	Stable for 12 months from the date of receipt of the product under proper storage and handling conditions. Avoid repeated freeze-thaw cycles.
RefSeq:	NP_055720
Locus ID:	2744
UniProt ID:	O94925
RefSeq Size:	4799
Cytogenetics:	2q32.2
RefSeq ORF:	2007
Synonyms:	AAD20; CASGID; DEE71; EIEE71; GAC; GAM; GDPAG; GLS1; KGA
Summary:	This gene encodes the K-type mitochondrial glutaminase. The encoded protein is an phosphate-activated amidohydrolase that catalyzes the hydrolysis of glutamine to glutamate and ammonia. This protein is primarily expressed in the brain and kidney plays an essential role in generating energy for metabolism, synthesizing the brain neurotransmitter glutamate and maintaining acid-base balance in the kidney. Alternate splicing results in multiple transcript variants. [provided by RefSeq, Jan 2012]
Protein Pathways:	Alanine, aspartate and glutamate metabolism, Arginine and proline metabolism, D-Glutamine and D-glutamate metabolism, Metabolic pathways, Nitrogen metabolism

Product images:



Coomassie blue staining of purified GLS protein (Cat# [TP306265]). The protein was produced from HEK293T cells transfected with GLS cDNA clone (Cat# [RC206265]) using MegaTran 2.0 (Cat# [TT210002]).