

## Product datasheet for TP306265

### Glutaminase (GLS) (NM\_014905) Human Recombinant Protein

#### Product data:

Product Type:	Recombinant Proteins
Description:	Recombinant protein of human glutaminase (GLS), nuclear gene encoding mitochondrial protein, 20 µg
Species:	Human
Expression Host:	HEK293T
Expression cDNA Clone or AA Sequence:	>RC206265 representing NM_014905 <b>Red</b> =Cloning site <b>Green</b> =Tags(s)

MMRLRGSGMLRDLLLRSPAGVSATLRRRAQPLVTLRPRGGGRPAAGPAAAARLHPWWGGGGWPAEP  
LAR  
GLSSSPSEILQELGKGSTHPQPGVSPPAAPGPKDGPGETDAFGNSEGKELVASGENKIKQGLLPSLE  
DLLFYTIAEGQEKIPVHKFITALKSTGLRTSDPRLKECMDMLRRTLQTTSDGVMMLDKDLFKKCVQSNIVL  
LTQAFRRKFVIPDFMSFTSHIDELYESAKKQSGGKVADYIPQLAKFSPDLWGVSVCTVDGQRHSTGDTKV  
PFCLQSCVKPLKYAIAVNDLGTEYVHRYVVGKEPSGLRFNKLFLNEDDKPHNPMVNAVGAIVTSLIKQGVN  
NAEKFDYVMQFLNKMAGNEYVGFSNATFQSERESGDRNFAIGYYLKEKKCFPEGTDVMGILDYFQLCSI  
EVTCEASVMAATLANGGFCPITGERVLSPEAVRNTLSLMHSCGMYDFSGQFAFHVGLPAKSGVAGGILL  
VVPNVMMGMMCWSPPLDKMGNSVKGIFHCHDLVSLCNFHNYDNLRFHAKKLDPRREGGDQRVKSVINL  
LFA  
AYTGDVSALRRFALSAMDMEQRDYDSRTALHVAEEGHVEVVKFLEACKVNPFPKDRWNNTPMDEAL  
HF  
GHHDVFKILQEYQVQYTPQGSDNGKENQTVHKNLDGLL

**SGPTRRRLEQKLISEEDLAANDILDYKDDDDKV**

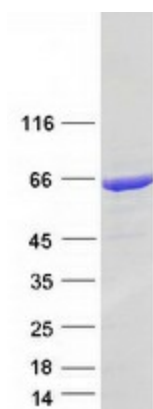
Tag:	C-Myc/DDK
Predicted MW:	73.3 kDa
Concentration:	>0.05 µg/µL as determined by microplate BCA method
Purity:	> 80% as determined by SDS-PAGE and Coomassie blue staining
Buffer:	25 mM Tris-HCl, 100 mM glycine, pH 7.3, 10% glycerol
Preparation:	Recombinant protein was captured through anti-DDK affinity column followed by conventional chromatography steps.



[View online »](#)

<b>Note:</b>	For testing in cell culture applications, please filter before use. Note that you may experience some loss of protein during the filtration process.
<b>Storage:</b>	Store at -80°C.
<b>Stability:</b>	Stable for 12 months from the date of receipt of the product under proper storage and handling conditions. Avoid repeated freeze-thaw cycles.
<b>RefSeq:</b>	<a href="#">NP_055720</a>
<b>Locus ID:</b>	2744
<b>UniProt ID:</b>	<a href="#">O94925</a>
<b>RefSeq Size:</b>	4799
<b>Cytogenetics:</b>	2q32.2
<b>RefSeq ORF:</b>	2007
<b>Synonyms:</b>	AAD20; CASGID; DEE71; EIEE71; GAC; GAM; GDPAG; GLS1; KGA
<b>Summary:</b>	This gene encodes the K-type mitochondrial glutaminase. The encoded protein is an phosphate-activated amidohydrolase that catalyzes the hydrolysis of glutamine to glutamate and ammonia. This protein is primarily expressed in the brain and kidney plays an essential role in generating energy for metabolism, synthesizing the brain neurotransmitter glutamate and maintaining acid-base balance in the kidney. Alternate splicing results in multiple transcript variants. [provided by RefSeq, Jan 2012]
<b>Protein Pathways:</b>	Alanine, aspartate and glutamate metabolism, Arginine and proline metabolism, D-Glutamine and D-glutamate metabolism, Metabolic pathways, Nitrogen metabolism

### Product images:



Coomassie blue staining of purified GLS protein (Cat# TP306265). The protein was produced from HEK293T cells transfected with GLS cDNA clone (Cat# [RC206265]) using MegaTran 2.0 (Cat# [TT210002]).