

## Product datasheet for **TP306256**

### GIPC (GIPC2) (NM\_017655) Human Recombinant Protein

#### Product data:

Product Type:	Recombinant Proteins
Description:	Recombinant protein of human GIPC PDZ domain containing family, member 2 (GIPC2), 20 µg
Species:	Human
Expression Host:	HEK293T
Expression cDNA Clone or AA Sequence:	>RC206256 protein sequence <b>Red</b> =Cloning site <b>Green</b> =Tags(s)

MPLKLRGKKKAKSKETAGLVEGEPTGAGGGSLASRAPARRLVFHAQLAHGSATGRVEGFSSIQELYAQI  
AGAFEISPSEILYCTLNTPKIDMERLLGGQLGLEDFIFAHVKGIEKEVNVYKSEDSLGLTITDNGVGYAF  
IKRIKDGGVIDSVKTICVGDHIESINGENIVGWRHYDVAKKLELKEELFTMKLIEPKKAFFIEPRSKA  
GKSSGEKIGCGRATLRLRSKGPATVEEMPSEKAKAIEKIDDVLELYMGIRDIDLATTMFEAGKDKVNPD  
EFAVALDETLGDFAFPDEFVFDVWGVIGDAKRRGL

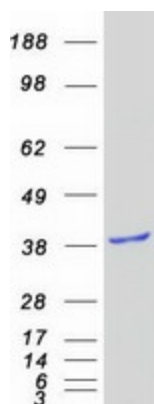
**TRTRPLEQKLISEEDLAANDILDYKDDDDKV**

Tag:	C-Myc/DDK
Predicted MW:	34.2 kDa
Concentration:	>0.05 µg/µL as determined by microplate BCA method
Purity:	> 80% as determined by SDS-PAGE and Coomassie blue staining
Buffer:	25 mM Tris-HCl, 100 mM glycine, pH 7.3, 10% glycerol
Preparation:	Recombinant protein was captured through anti-DDK affinity column followed by conventional chromatography steps.
Note:	For testing in cell culture applications, please filter before use. Note that you may experience some loss of protein during the filtration process.
Storage:	Store at -80°C.
Stability:	Stable for 12 months from the date of receipt of the product under proper storage and handling conditions. Avoid repeated freeze-thaw cycles.
RefSeq:	<u><a href="#">NP_060125</a></u>
Locus ID:	54810



[View online »](#)

UniProt ID: [Q8TF65](#), [A0A384P5H2](#)  
RefSeq Size: 2838  
Cytogenetics: 1p31.1  
RefSeq ORF: 945  
Synonyms: SEMCAP-2; SEMCAP2

**Product images:**

Coomassie blue staining of purified GIPC2 protein (Cat# TP306256). The protein was produced from HEK293T cells transfected with GIPC2 cDNA clone (Cat# [RC206256]) using MegaTran 2.0 (Cat# [TT210002]).