

Product datasheet for **TP306233L**

TEM7 (PLXDC1) (NM_020405) Human Recombinant Protein

Product data:

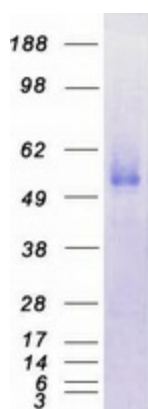
| | |
|---------------------------------------|--|
| Product Type: | Recombinant Proteins |
| Description: | Recombinant protein of human plexin domain containing 1 (PLXDC1), 1 mg |
| Species: | Human |
| Expression Host: | HEK293T |
| Expression cDNA Clone or AA Sequence: | >RC206233 protein sequence Red =Cloning site Green =Tags(s) |
| | <p>MRGELWLLVLLVLRFAARALSPQPGAGHDEGPGSGWAAKGTVRGWNRRARESPGHVSEPDRDRTQLSQDLGGG TLAMDTLPDNRTRVVEDNHSYYVSRLYGPSEPHSRELWVDVAEANRSQVKIHTILSNTHRQASRVVLSFD FPFYGHPLRQITMATGGFIFMGDVIHRMLTATQYVAPLMANFNPGYSDNSTVYFDNGTVFVQWDHVYL QGWEDKGSFTFQAALHHDGRIVFAYKEIPMSVPEISSQHPVKTGLSDAFMILNPSDPVPESSRRRSIFEY HRIELDPSKVTSMASAVEFTPLPTCLQHRSCDACMSSDLTFNCSWCHVLQRCSSGFDRYRQEWMDYGCAQE AEGRMCEDFQDEDHDSASPDTSFSPYDGDLTSSSLFIDSLTTEDDTKLNPNYAGGDGLQNNLSPKTKGT PVHLGTIVGIVLAVLLVAAIILAGIYINGHPTSNAALFFIERRPHHWPAMKFRSHPDHSTYAEVEPSGHE KEGFMEAEQC</p> <p>TRTRPLEQKLISEEDLAANDILDYKDDDDKV</p> |
| Tag: | C-Myc/DDK |
| Predicted MW: | 55.6 kDa |
| Concentration: | >0.05 µg/µL as determined by microplate BCA method |
| Purity: | > 80% as determined by SDS-PAGE and Coomassie blue staining |
| Buffer: | 25 mM Tris-HCl, 100 mM glycine, pH 7.3, 10% glycerol |
| Preparation: | Recombinant protein was captured through anti-DDK affinity column followed by conventional chromatography steps. |
| Note: | For testing in cell culture applications, please filter before use. Note that you may experience some loss of protein during the filtration process. |
| Storage: | Store at -80°C. |
| Stability: | Stable for 12 months from the date of receipt of the product under proper storage and handling conditions. Avoid repeated freeze-thaw cycles. |



[View online »](#)

| | |
|-------------------|---|
| RefSeq: | NP_065138 |
| Locus ID: | 57125 |
| UniProt ID: | Q8IUUK5 |
| RefSeq Size: | 6271 |
| Cytogenetics: | 17q12 |
| RefSeq ORF: | 1500 |
| Synonyms: | TEM3; TEM7 |
| Summary: | Plays a critical role in endothelial cell capillary morphogenesis.[UniProtKB/Swiss-Prot Function] |
| Protein Families: | Druggable Genome, Secreted Protein, Transmembrane |

Product images:



Coomassie blue staining of purified PLXDC1 protein (Cat# [TP306233]). The protein was produced from HEK293T cells transfected with PLXDC1 cDNA clone (Cat# [RC206233]) using MegaTran 2.0 (Cat# [TT210002]).