

## Product datasheet for **TP306233**

### TEM7 (PLXDC1) (NM\_020405) Human Recombinant Protein

#### Product data:

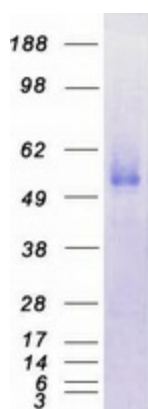
Product Type:	Recombinant Proteins
Description:	Recombinant protein of human plexin domain containing 1 (PLXDC1), 20 µg
Species:	Human
Expression Host:	HEK293T
Expression cDNA Clone or AA Sequence:	>RC206233 protein sequence <b>Red</b> =Cloning site <b>Green</b> =Tags(s)
	<p>MRGELWLLVLLVREAARALSPQPGAGHDEGPGSGWAAKGTVRGWNRRARESPGHVSEPDRDRTQLSQDLGGG TLAMDTLPDNRTRVVEDNHSYYVSRLYGPSEPHSRELWVDVAEANRSQVKIHTILSNTHRQASRVVLSFD FPFYGHPLRQITMATGGFIFMGDVIHRMLTATQYVAPLMANFNPGYSDNSTVVYFDNGTVFVQWDHVYL QGWEKGSFTFQAALHHDGRIVFAYKEIPMSVPEISSQHPVKTGLSDAFMILNPSDPVPESSRRRSIFEY HRIELDPSKVTSMASAVEFTPLPTCLQHRSCDACMSSDLTFNCSWCHVLQRCSSGFDRYRQEWMDYGCAQE AEGRMCEDFQDEDHDSASPDTSFSPYDGDLTSSSLFIDSLTTEDDTKLNPNYAGGDGLQNNLSPKTKGT PVHLGTIVGIVLAVLLVAAILLAGIYINGHPTSNAALFFIERRPHHWPAMKFRSHPDHSTYAEVEPSGHE KEGFMEAEQC</p> <p><b>TRTRPLEQKLISEEDLAANDILDYKDDDDKV</b></p>
Tag:	C-Myc/DDK
Predicted MW:	55.6 kDa
Concentration:	>0.05 µg/µL as determined by microplate BCA method
Purity:	> 80% as determined by SDS-PAGE and Coomassie blue staining
Buffer:	25 mM Tris-HCl, 100 mM glycine, pH 7.3, 10% glycerol
Preparation:	Recombinant protein was captured through anti-DDK affinity column followed by conventional chromatography steps.
Note:	For testing in cell culture applications, please filter before use. Note that you may experience some loss of protein during the filtration process.
Storage:	Store at -80°C.
Stability:	Stable for 12 months from the date of receipt of the product under proper storage and handling conditions. Avoid repeated freeze-thaw cycles.



[View online »](#)

RefSeq:	<a href="#">NP_065138</a>
Locus ID:	57125
UniProt ID:	<a href="#">Q8IUK5</a>
RefSeq Size:	6271
Cytogenetics:	17q12
RefSeq ORF:	1500
Synonyms:	TEM3; TEM7
Summary:	Plays a critical role in endothelial cell capillary morphogenesis.[UniProtKB/Swiss-Prot Function]
Protein Families:	Druggable Genome, Secreted Protein, Transmembrane

### Product images:



Coomassie blue staining of purified PLXDC1 protein (Cat# TP306233). The protein was produced from HEK293T cells transfected with PLXDC1 cDNA clone (Cat# [RC206233]) using MegaTran 2.0 (Cat# [TT210002]).