

## Product datasheet for TP306226L

### CIPC (NM\_033426) Human Recombinant Protein

#### Product data:

Product Type:	Recombinant Proteins
Description:	Recombinant protein of human KIAA1737 (KIAA1737), 1 mg
Species:	Human
Expression Host:	HEK293T
Expression cDNA Clone or AA Sequence:	>RC206226 protein sequence <b>Red</b> =Cloning site <b>Green</b> =Tags(s)

MERKNPSRESPRRLSAKVGGKSTEMKKVARQFGMAAAESDKDSGFSDDGSSECLSSAEQMESEDMLSALGWS  
REDRPRQNSKTAKNAFPTLSPMVVMKNVLVKQGSSSSQLQSWTVQPSFEVISAQPQLLFLHPPVPSVSP  
CHTGEKKSRSRNYLPILNSYTKIAPHPGKRGLSLGPEEKGTSGVQKKICTERLGPSSSSEPTKAGAVPS  
SPSTPAPPSAKLAEDSALQGVPSLVAGGSPQTLQPVSSSHVAKAPSLTFASPSPVCASDSTLHGLESNS  
PLSPLSANYSSPLWAAEHLCRSPDIFSEQRQSKHRRFQNTLVVLHKSGLLEITLTKELIRQNQATQVEL  
DQLKEQTQLFIEATKSRAPQAWAKLQASLTPGSSNTGSDLEAFSDHPAI

**TRTRPLEQKLISEEDLAANDILDYKDDDDKV**

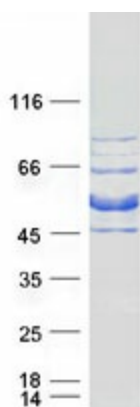
Tag:	C-Myc/DDK
Predicted MW:	42.5 kDa
Concentration:	>0.05 µg/µL as determined by microplate BCA method
Purity:	> 80% as determined by SDS-PAGE and Coomassie blue staining
Buffer:	25 mM Tris-HCl, 100 mM glycine, pH 7.3, 10% glycerol
Preparation:	Recombinant protein was captured through anti-DDK affinity column followed by conventional chromatography steps.
Note:	For testing in cell culture applications, please filter before use. Note that you may experience some loss of protein during the filtration process.
Storage:	Store at -80°C.
Stability:	Stable for 12 months from the date of receipt of the product under proper storage and handling conditions. Avoid repeated freeze-thaw cycles.
RefSeq:	<a href="#">NP_219494</a>
Locus ID:	85457



[View online »](#)

UniProt ID:	<a href="#">Q9C0C6</a>
RefSeq Size:	4397
Cytogenetics:	14q24.3
RefSeq ORF:	1197
Synonyms:	KIAA1737
Summary:	Transcriptional repressor which may act as a negative-feedback regulator of CLOCK-ARNTL/BMAL1 transcriptional activity in the circadian-clock mechanism. May stimulate ARNTL/BMAL1-dependent phosphorylation of CLOCK. However, the physiological relevance of these observations is unsure, since experiments in an animal model showed that CIPC is not critically required for basic circadian clock.[UniProtKB/Swiss-Prot Function]

### Product images:



Coomassie blue staining of purified CIPC protein (Cat# [TP306226]). The protein was produced from HEK293T cells transfected with CIPC cDNA clone (Cat# [RC206226]) using MegaTran 2.0 (Cat# [TT210002]).