

Product datasheet for **TP306187**

TXNDC (TMX1) (NM_030755) Human Recombinant Protein

Product data:

Product Type: Recombinant Proteins
Description: Recombinant protein of human thioredoxin-related transmembrane protein 1 (TMX1), 20 µg
Species: Human
Expression Host: HEK293T
Expression cDNA >RC206187 protein sequence
Clone or AA Sequence: Red=Cloning site Green=Tags(s)

MAPSGSLAVPLAVMVPLLWGAPWTHGRRSNVRVITDENWRELLEGDWMIEFYAPWCPACQNLQPEWESFA
EWGEDLEVNIKVDVTEQPGLSGRFIINALPTIYHCKDGEFRRYQGPRTKKDFINFISDKEWKSIEPVSS
WFGPGSVLMSSMSALFQLSMWIRTCHNYFIEDLGLPVWGSYTVFALATLFSGLLLGLCMIFVADCLCPSK
RRRPQYPYPYPSKLLSESAQPLKKVEEEQEADEEDVSEEEAESKEGTNKDFPQNAIRQSLGPSLATDKS

TRTRPLEQKLISEEDLAANDILDYKDDDDKV

Tag: C-Myc/DDK
Predicted MW: 31.6 kDa
Concentration: >0.05 µg/µL as determined by microplate BCA method
Purity: > 80% as determined by SDS-PAGE and Coomassie blue staining
Buffer: 25 mM Tris-HCl, 100 mM glycine, pH 7.3, 10% glycerol
Preparation: Recombinant protein was captured through anti-DDK affinity column followed by conventional chromatography steps.
Note: For testing in cell culture applications, please filter before use. Note that you may experience some loss of protein during the filtration process.
Storage: Store at -80°C.
Stability: Stable for 12 months from the date of receipt of the product under proper storage and handling conditions. Avoid repeated freeze-thaw cycles.
RefSeq: [NP_110382](#)
Locus ID: 81542
UniProt ID: [Q9H3N1](#)



[View online >](#)

RefSeq Size: 4119

Cytogenetics: 14q22.1

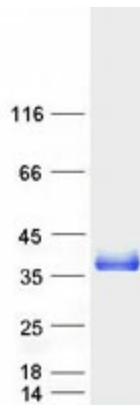
RefSeq ORF: 840

Synonyms: PDIA11; TMX; TXNDC; TXNDC1

Summary: This gene encodes a member of the disulfide isomerase (PDI) family of endoplasmic reticulum (ER) proteins that catalyze protein folding and thiol-disulfide interchange reactions. The encoded protein has an N-terminal ER-signal sequence, a catalytically active thioredoxin domain, and one transmembrane domain. Unlike most members of this gene family, it lacks a C-terminal ER-retention sequence. The mature membrane-bound protein can both oxidize and reduce disulfide bonds and acts selectively on membrane-associated polypeptides. [provided by RefSeq, Jan 2017]

Protein Families: Druggable Genome, Transcription Factors, Transmembrane

Product images:



Coomassie blue staining of purified TMX1 protein (Cat# TP306187). The protein was produced from HEK293T cells transfected with TMX1 cDNA clone (Cat# [RC206187]) using MegaTran 2.0 (Cat# [TT210002]).