

## Product datasheet for **TP306185**

### **TMEM151A (NM\_153266) Human Recombinant Protein**

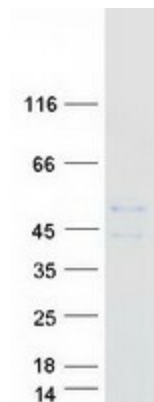
#### **Product data:**

Product Type:	Recombinant Proteins
Description:	Recombinant protein of human transmembrane protein 151A (TMEM151A), 20 µg
Species:	Human
Expression Host:	HEK293T
Expression cDNA Clone or AA Sequence:	>RC206185 protein sequence <b>Red</b> =Cloning site <b>Green</b> =Tags(s)
	MPEDGAGDGGVEPALIPDGEPLREEQRPLKQSLGSSLCRESHWKCLLLTLLIHACGAVVAWCRLATVPRL VLGPAAALARGAGGPPPTYPASPCSDGYLIPLAFVSLLYLLYLAECWHCHVRSCQAPRTDAHTVLALIR RLQQAPPCVWWKATSYHYVRRTRQITRYRNGDAYTTTQVYHERADSRTARGEFDYSAHGVRDVSKELVGL AEHAATRLRFTKCFSGSAEAEASYLTQRARFFSANEGLDLYLEAREGMHLKDVFRESLMVFADPRSP WYARAWVFWLVSAATLSWPLRVAAAYGTAHVHYQVEKLFGASSPPPGAVPSGPPLSRVATVDFTELEWHI CSNRQLVPSYSEAVVMGAGSGAYLRGCQRCRRSVSSNSLPPARPSGPRLPFSRSLSLGAGGRATPGVFR SLSGGPLGRRGEDTEPLESPPCYEDALYFPVLIVHGDGSGCQGDGQAL
	<b>TRTRPLEQKLISEEDLAANDILDYKDDDDKV</b>
Tag:	C-Myc/DDK
Predicted MW:	51.1 kDa
Concentration:	>0.05 µg/µL as determined by microplate BCA method
Purity:	> 80% as determined by SDS-PAGE and Coomassie blue staining
Buffer:	25 mM Tris-HCl, 100 mM glycine, pH 7.3, 10% glycerol
Preparation:	Recombinant protein was captured through anti-DDK affinity column followed by conventional chromatography steps.
Note:	For testing in cell culture applications, please filter before use. Note that you may experience some loss of protein during the filtration process.
Storage:	Store at -80°C.
Stability:	Stable for 12 months from the date of receipt of the product under proper storage and handling conditions. Avoid repeated freeze-thaw cycles.
RefSeq:	<u><a href="#">NP_694998</a></u>



[View online »](#)

Locus ID: 256472  
 UniProt ID: [Q8N4L1](#)  
 RefSeq Size: 2546  
 Cytogenetics: 11q13.2  
 RefSeq ORF: 1404  
 Synonyms: TMEM151

**Product images:**


Coomassie blue staining of purified TMEM151A protein (Cat# TP306185). The protein was produced from HEK293T cells transfected with TMEM151A cDNA clone (Cat# [RC206185]) using MegaTran 2.0 (Cat# [TT210002]).